

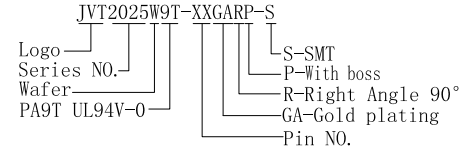
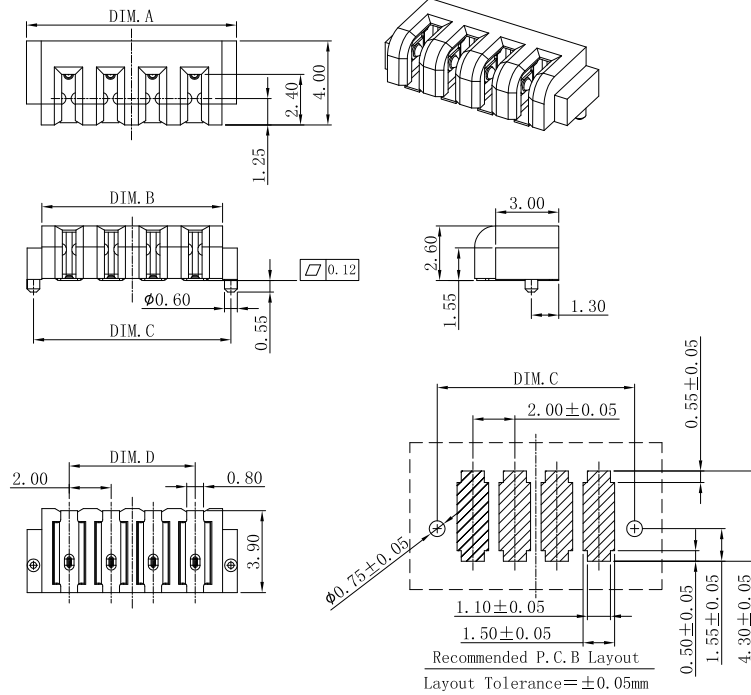
Specifications

- SPECIFICATIONS
 - Current Rating: 5A AC / DC
 - Instant Current: 7A AC / DC
 - Withstanding Voltage: 500V AC/minute
 - Temperature Range: $-40^{\circ}\text{C} \sim +105^{\circ}\text{C}$
 - Insulation Resistance: 100M Ω Min.
 - Contact Resistance: 30m Ω Max.
 - Compliant with RoHS and REACH
- Contact JVT for details

JVT2025/2026/2027 SERIES 2.0mm pitch board to board connector

JVT2025W9T

2.0mm Pitch housing

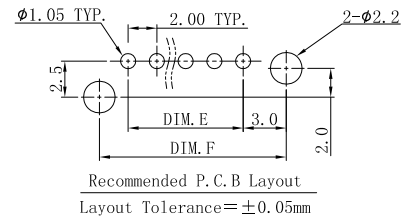
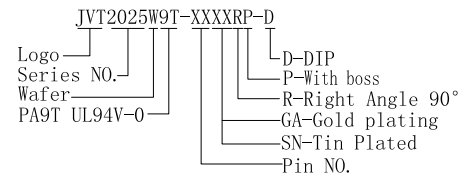
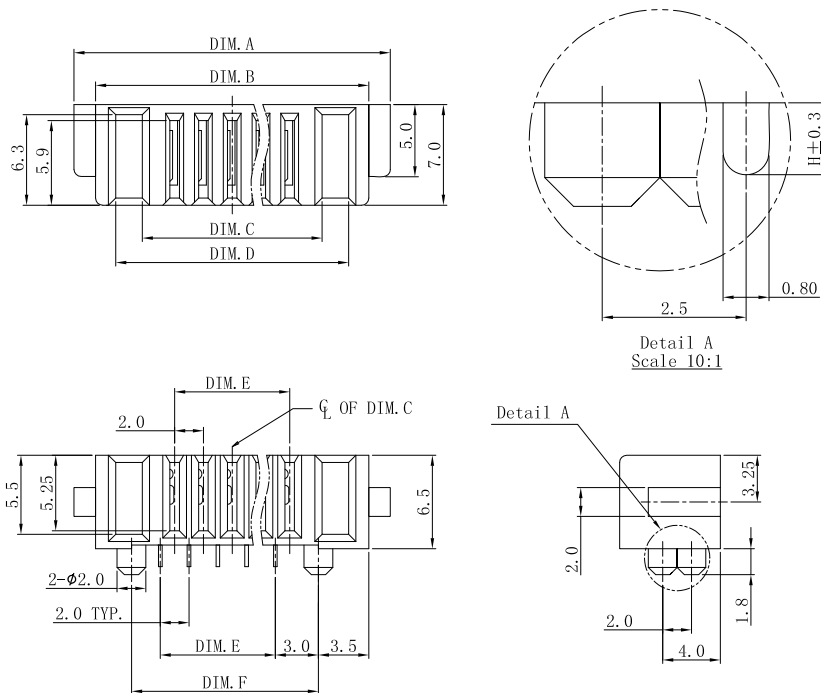


PART NO	Dim. A	Dim. B	Dim. C	Dim. D
03	8.0	6.60	7.40	4.0
04	10.0	8.60	9.40	6.0
05	12.0	10.60	11.40	8.0
06	14.0	12.60	13.40	10.0

JVT2025W9T-XXGARP-S	PA9T UL94V-0	Phos Bronze	Gold plating
PART NO	Material	Material(Pin)	Finish(Pin)

JVT2025W9T

2.0mm Pitch Crimp Terminal



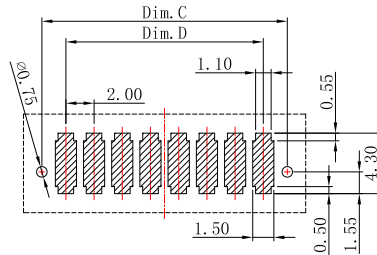
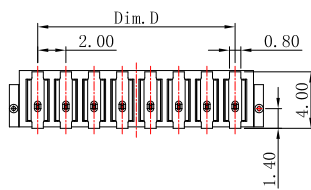
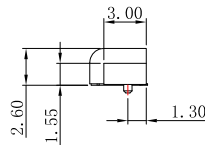
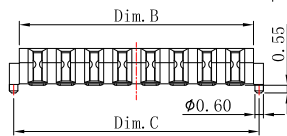
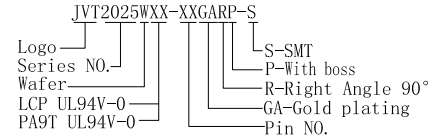
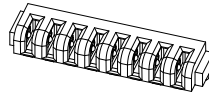
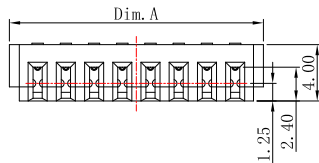
PART NO	Dim. A	Dim. B	Dim. C	Dim. D	Dim. E	Dim. F
05	22.0	19.0	12.5	16.2	8.0	13.0
06	24.0	21.0	14.5	18.2	10.0	15.0
07	26.0	23.0	16.5	20.2	12.0	17.0
08	28.0	25.0	18.5	22.2	14.0	19.0
09	30.0	27.0	20.5	24.2	16.0	21.0
10	32.0	29.0	22.5	26.2	18.0	23.0
11	34.0	31.0	24.5	28.2	20.0	25.0
12	36.0	33.0	26.5	30.2	22.0	27.0

JVT2025W9T-XXSNRP-D	PA9T UL94V-0	Phos Bronze	Tin plating
JVT2025W9T-XXGARP-D			All gold plating
PART NO	Material	Material(Pin)	Finish(Pin)

JVT2025/2026/2027 SERIES 2.0mm pitch board to board connector

JVT2025W

2.0mm Pitch 90° Battery socket With boss SMT



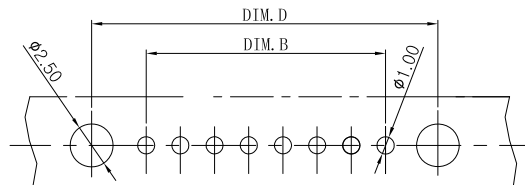
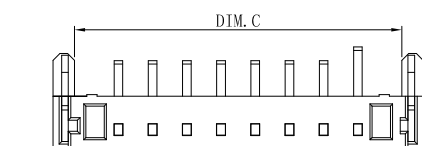
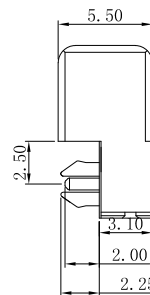
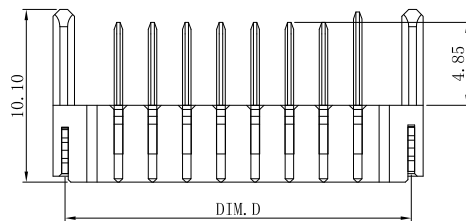
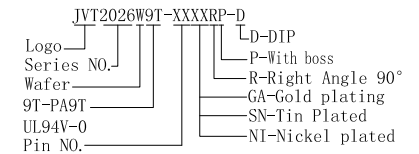
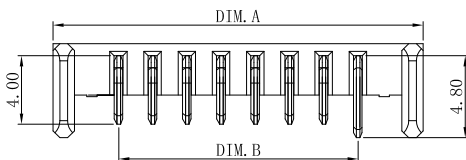
P/N	Dim. A	Dim. B	Dim. C	Dim. D
07Pin	16.0	14.60	15.40	12.0
08Pin	18.0	16.60	17.40	14.0

Recommended P. C. B Layout
Layout Tolerance = ±0.05mm

JVT2025W9T-XXGARP-S	PA9T UL94V-0	Gold plating	Phos Bronze
JVT2025WLP-XXGARP-S	LCP UL94V-0		
PART NO	Material	Finish(Pin)	Material (Solder Tabs)

JVT2006W

2.0mm Pitch 90° DIP With boss Battery male



Poles	Dimensions			
	A	B	C	D
03	11.65	4.00	9.15	10.25
04	13.65	6.00	11.15	12.25
05	15.65	8.00	13.15	14.25
06	17.65	10.00	15.15	16.25
07	19.65	12.00	17.15	18.25
08	21.65	14.00	19.15	20.25
09	23.65	16.00	21.15	22.25
10	25.65	18.00	23.15	24.25
11	27.65	20.00	25.15	26.25
12	29.65	22.00	27.15	28.25

Recommended P. C. B LAYOUT

JVT2026W9T-XXGARP-D	PA9T UL94V-0	Gold plating	Phos Bronze
JVT2026W9T-XXSNRP-D		Tin plating	
PART NO	Material	Finish(Pin)	Material (Solder Tabs)