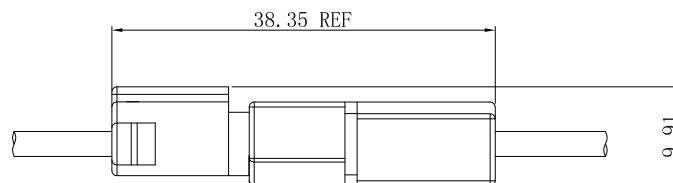


## Specifications

- Voltage rating: 250V AC, DC
- Current Rating: 10A, AC, DC
- Withstand voltage: 1500V AC/minute
- Contact resistance: 20m $\Omega$  max
- Insulation resistance: 1000M $\Omega$  min
- Temperature range: -40 $^{\circ}$ C ~ +105 $^{\circ}$ C
- Suitable JVT1114T series Terminal  
JVT1114H series Housing
- Compliant with RoHS and REACH  
Contact JVT for details

## Assembly layout



**JVT1114H**

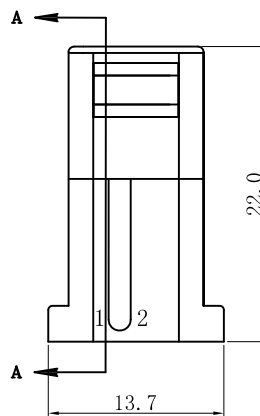
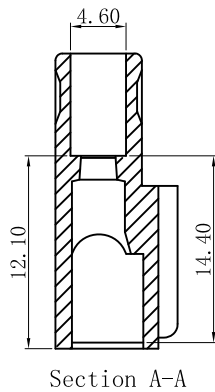
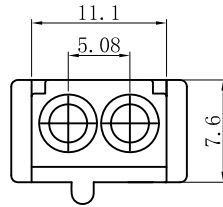
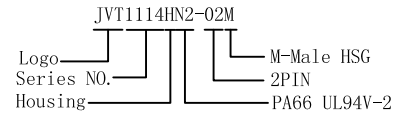
5.08mm Pitch housing

HOUSING

Part No. : JVT1114HN2-02M

Material: PA66 UL 94V-2

Mates With Part(s): JVT1114 Terminal



**JVT1114H**

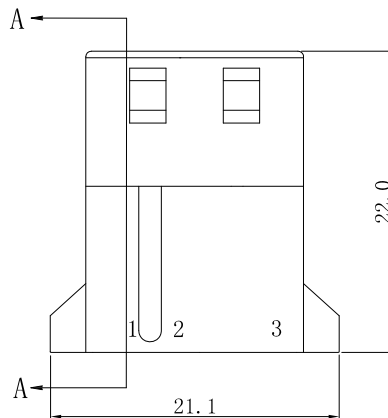
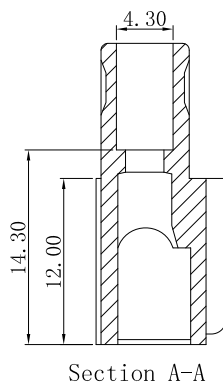
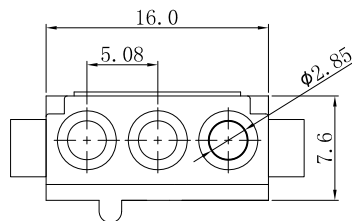
5.08mm Pitch housing

HOUSING

Part No. : JVT1114HN2-03M

Material: PA66 UL 94V-2

Mates With Part(s): JVT1114 Terminal



**JVT1114H**

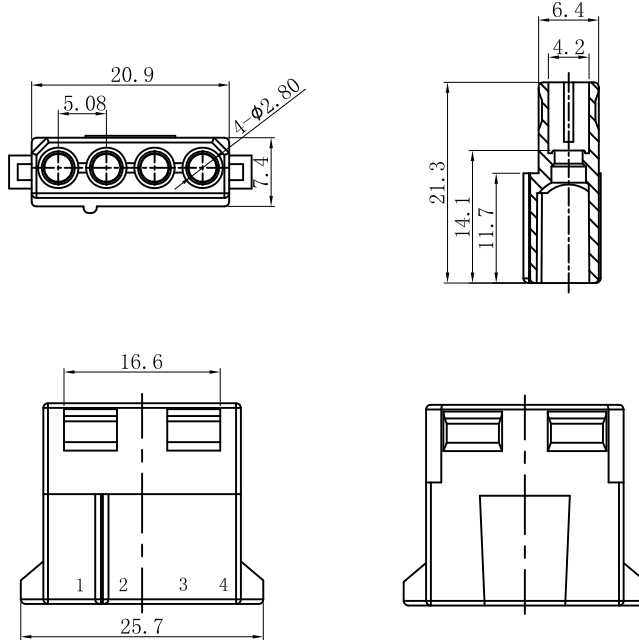
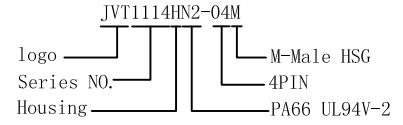
5.08mm Pitch housing

HOUSING

Part No.: JVT1114HN2-04M

Material: PA66 UL 94V-2

Mates With Part(s): JVT1114 Terminal



**JVT1114H**

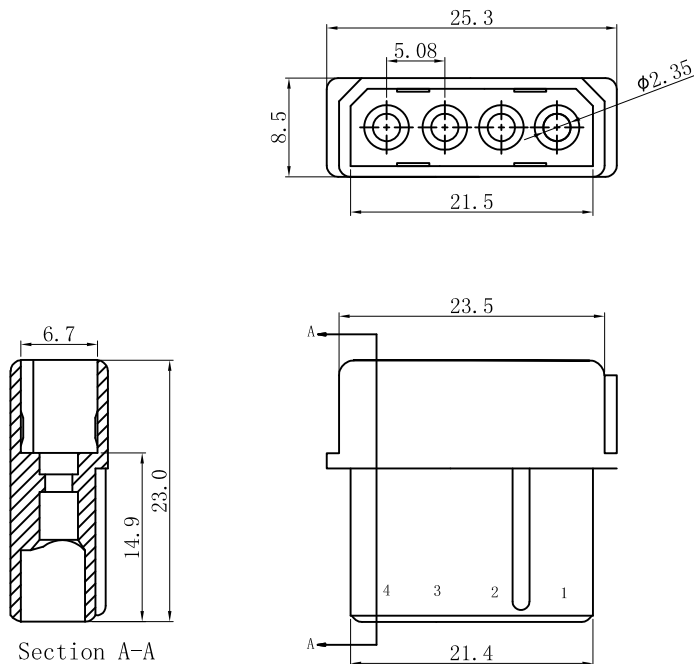
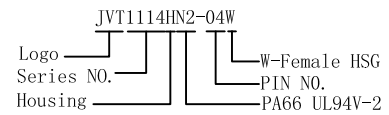
5.08mm Pitch housing

HOUSING

Part No.: JVT1114HN2-04W

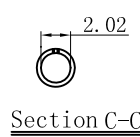
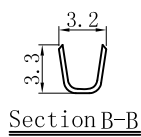
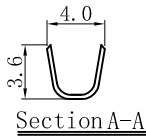
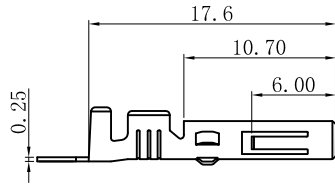
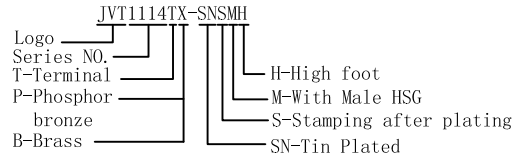
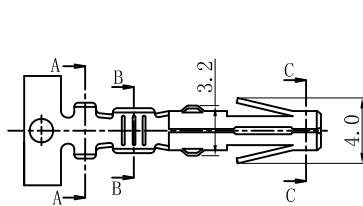
Material: PA66 UL 94V-2

Mates With Part(s): JVT1114 Terminal



**JVT1114T**

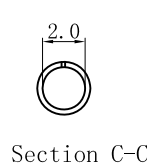
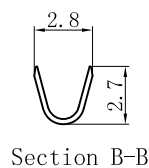
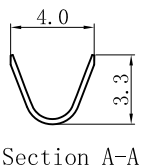
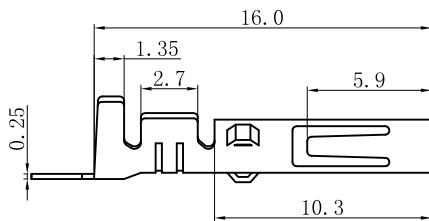
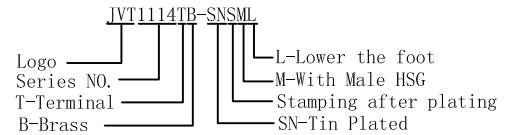
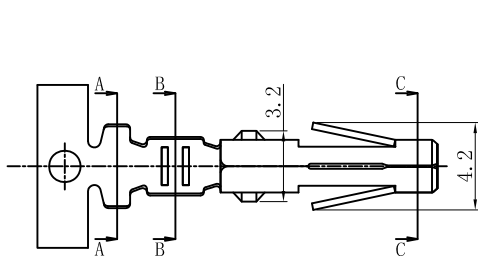
5.08mm Pitch Crimp Terminal



JVT1114TB-SNSMH	Brass	Tin Plated	AWG#16~20	3.10mm Max	JVT1114 HOUSING
JVT1114TP-SNSMH	Phosphor bronze				
PART NO	Material	Finish (Pin)	Wire Range	Insulation O. D.	Mates With Part(s)

**JVT1114T**

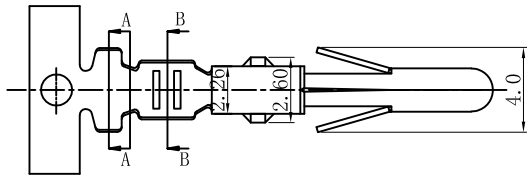
5.08mm Pitch Crimp Terminal



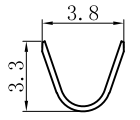
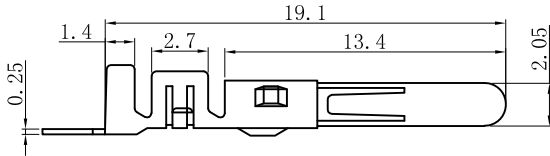
JVT1114TB-SNSML	Brass	Tin Plated	AWG#22~26	2.40mm Max	JVT1114 HOUSING
PART NO	Material	Finish (Pin)	Wire Range	Insulation O. D.	Mates With Part(s)

**JVT1114T**

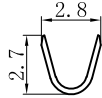
5.08mm Pitch Crimp Terminal



JVT1114TX-SNXWL  
 Logo  
 Series NO.  
 T-Terminal  
 B-Brass  
 P-Phosphor bronze  
 Lower the foot  
 W-With female HSG  
 S-Stamping after plating  
 E-Plating after stamping  
 SN-Tin Plated



section A-A

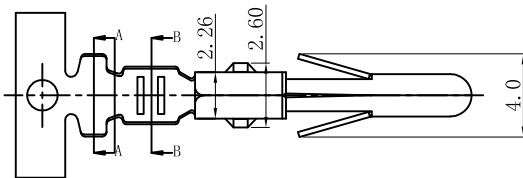


section B-B

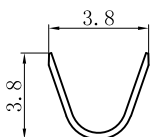
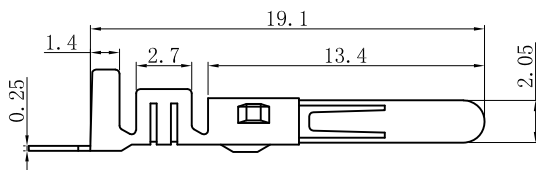
JVT1114TB-SNXWL	Brass	Tin-Plated	AWG#22~26	2.4mm (Max)	JVT1114 Housing
JVT1114TP-SNXWL	Phosphor Bronze				
PART NO	Material	Finish(Pin)	Wire Range	Insulation O.D.	Mates With Part(s)

**JVT1114T**

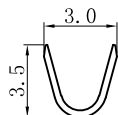
5.08mm Pitch Crimp Terminal



JVT1114TX-XXXWH  
 Logo  
 Series NO.  
 T-Terminal  
 B-Brass  
 P-Phosphor bronze  
 H-High  
 W-With female HSG  
 S-Stamping after plating  
 E-Plating after stamping  
 SN-Tin Plated  
 GP-Gold plating



SECTION A-A



SECTION B-B

JVT1114TX-SNXWL	Brass/Phosphor Bronze	Tin-Plated	AWG#16~20	3.10mm (Max)	JVT1114 Housing
JVT1114TX-GAXWL		Gold-plated			
PART NO	Material	Finish(Pin)	Wire Range	Insulation O.D.	Mates With Part(s)

**JVT1114H**

5.08mm Pitch housing

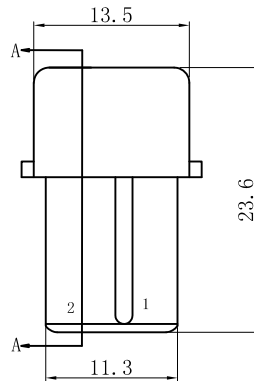
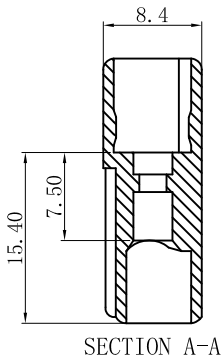
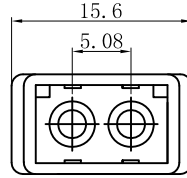
HOUSING

Part No. : JVT1114HN2-02M

Material: PA66 UL 94V-2

Mates With Part(s): JVT1114 Terminal

JVT1114HN2-02W  
Logo \_\_\_\_\_ W-Female HSG  
Series NO. \_\_\_\_\_ PIN NO.  
Housing \_\_\_\_\_ PA66 UL94V-2



**JVT1114H**

5.08mm Pitch housing

HOUSING

Part No. : JVT1114HN2-03W

Material: PA66 UL 94V-2

Mates With Part(s): JVT1114 Terminal

JVT1114HN2-03W  
Logo \_\_\_\_\_ W-Female HSG  
Series NO. \_\_\_\_\_ PIN NO.  
Housing \_\_\_\_\_ PA66 UL94V-2

