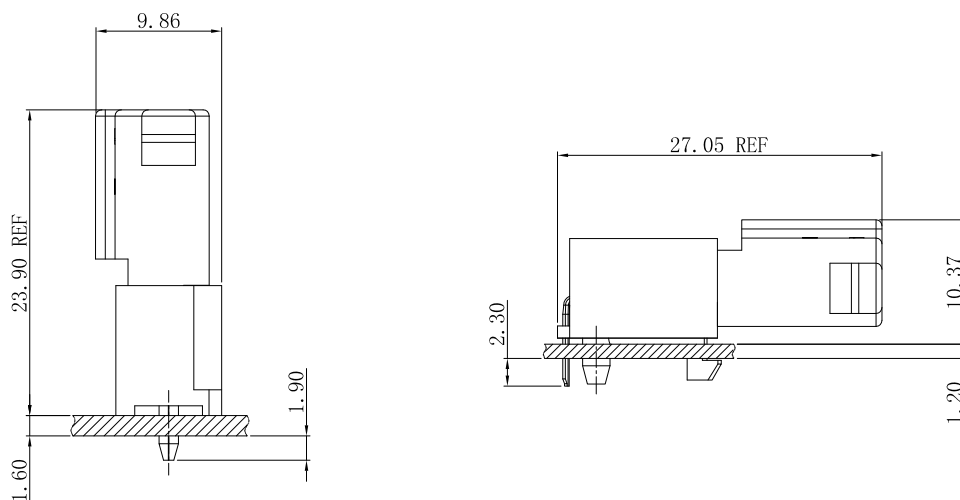


## Specifications

- Voltage rating: 250V AC, DC
- Current Rating: 10A, AC, DC
- Withstand voltage: 1500V AC/minute
- Contact resistance: 20mΩ max
- Insulation resistance: 1000MΩ min
- Temperature range: -40°C ~ +105°C
- Suitable JVT1114T series Terminal  
JVT1114H series Housing
- Compliant with RoHS and REACH  
Contact JVT for details

## Assembly layout



**JVT1114H**

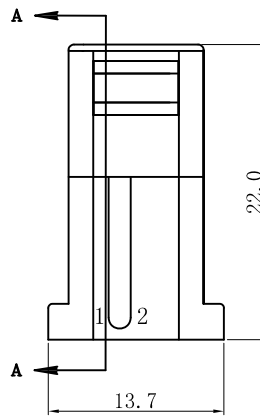
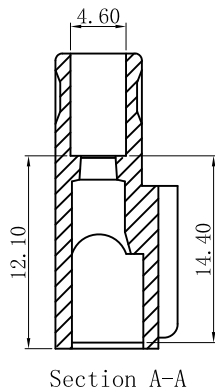
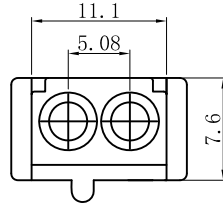
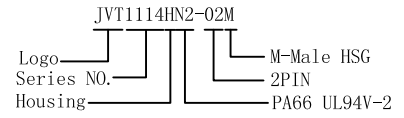
5.08mm Pitch housing

HOUSING

Part No. : JVT1114HN2-02M

Material: PA66 UL 94V-2

Mates With Part(s): JVT1114 Terminal



**JVT1114H**

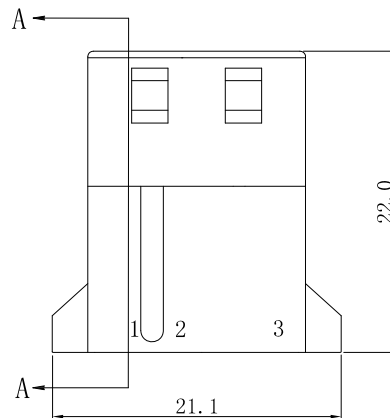
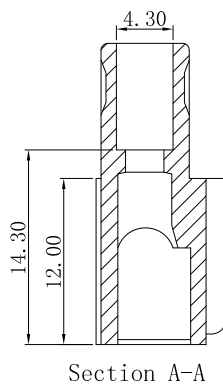
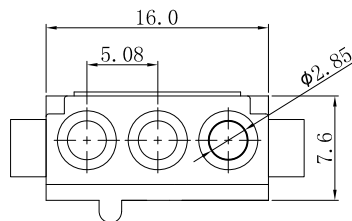
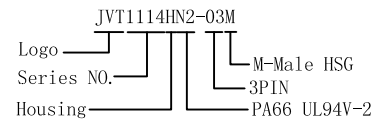
5.08mm Pitch housing

HOUSING

Part No. : JVT1114HN2-03M

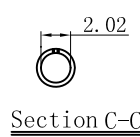
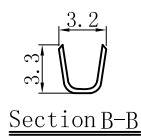
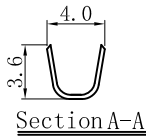
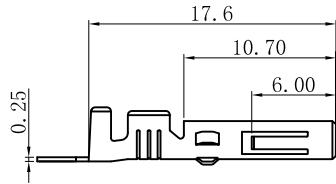
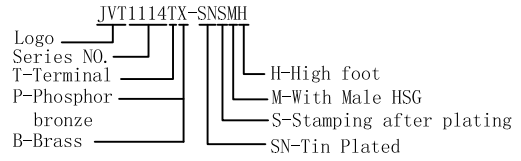
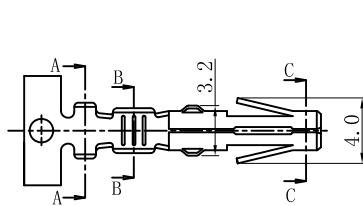
Material: PA66 UL 94V-2

Mates With Part(s): JVT1114 Terminal



**JVT1114T**

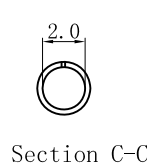
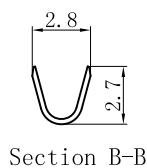
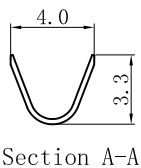
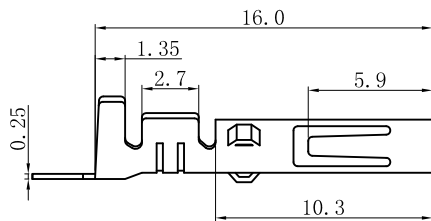
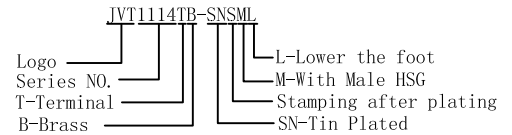
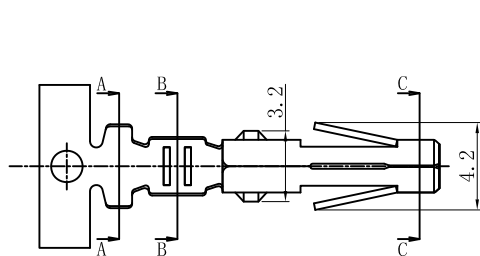
5.08mm Pitch Crimp Terminal



|                 |                 |              |            |                  |                    |
|-----------------|-----------------|--------------|------------|------------------|--------------------|
| JVT1114TB-SNSMH | Brass           | Tin Plated   | AWG#16~20  | 3.10mm Max       | JVT1114 HOUSING    |
| JVT1114TP-SNSMH | Phosphor bronze |              |            |                  |                    |
| PART NO         | Material        | Finish (Pin) | Wire Range | Insulation O. D. | Mates With Part(s) |

**JVT1114T**

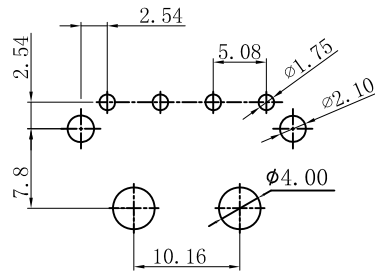
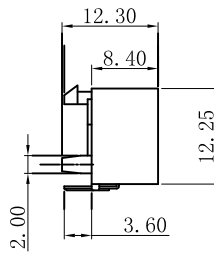
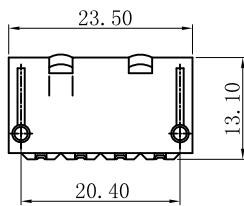
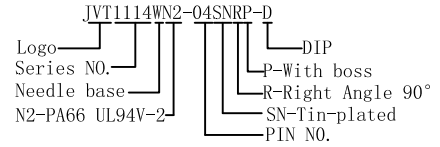
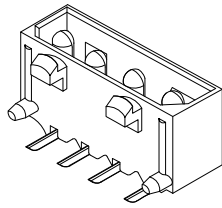
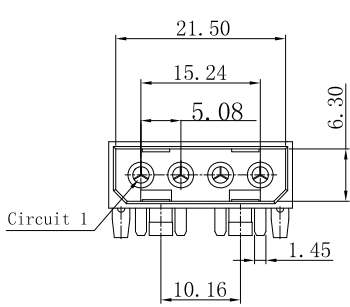
5.08mm Pitch Crimp Terminal



|                 |          |              |            |                  |                    |
|-----------------|----------|--------------|------------|------------------|--------------------|
| JVT1114TB-SNSML | Brass    | Tin Plated   | AWG#22~26  | 2.40mm Max       | JVT1114 HOUSING    |
| PART NO         | Material | Finish (Pin) | Wire Range | Insulation O. D. | Mates With Part(s) |

**JVT1114W**

5.08mm Pitch Wafer-DIP TYPE

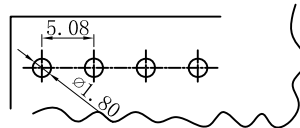
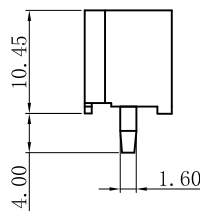
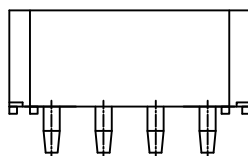
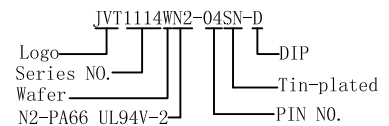
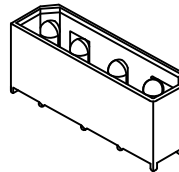
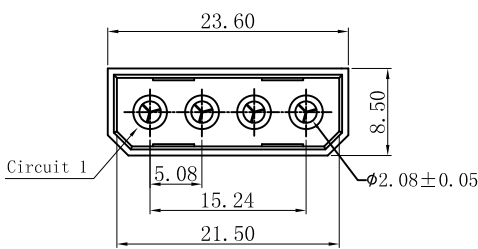


RECOMMEND PCB LAYOUT

|                     |              |               |             |                    |
|---------------------|--------------|---------------|-------------|--------------------|
| JVT1114WN2-04SNRP-D | PA66 UL94V-2 | Brass         | Tin Plated  | JVT1114 Housing    |
| PART NO             | Material     | Material(Pin) | Finish(Pin) | Mates With Part(s) |

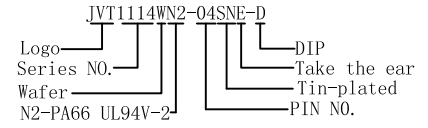
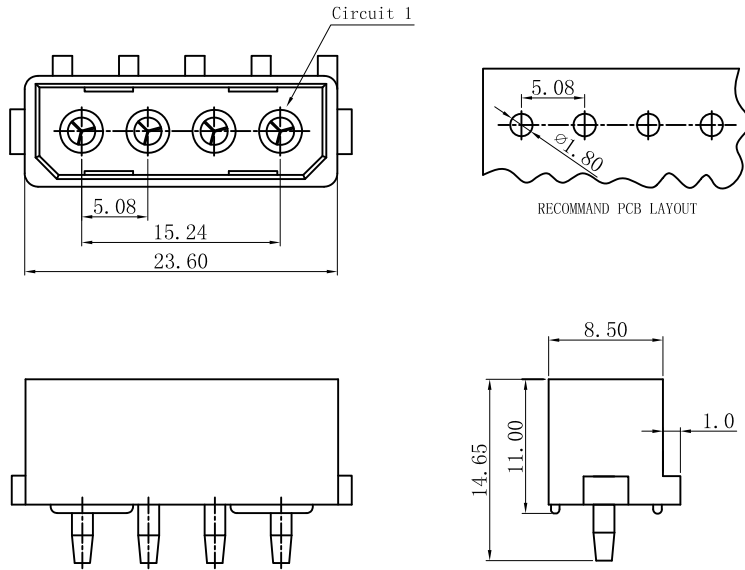
**JVT1114H**

5.08mm Pitch Wafer-DIP TYPE



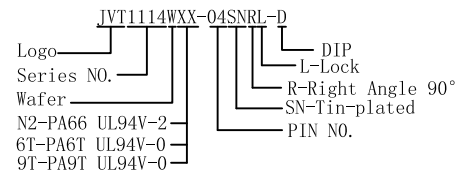
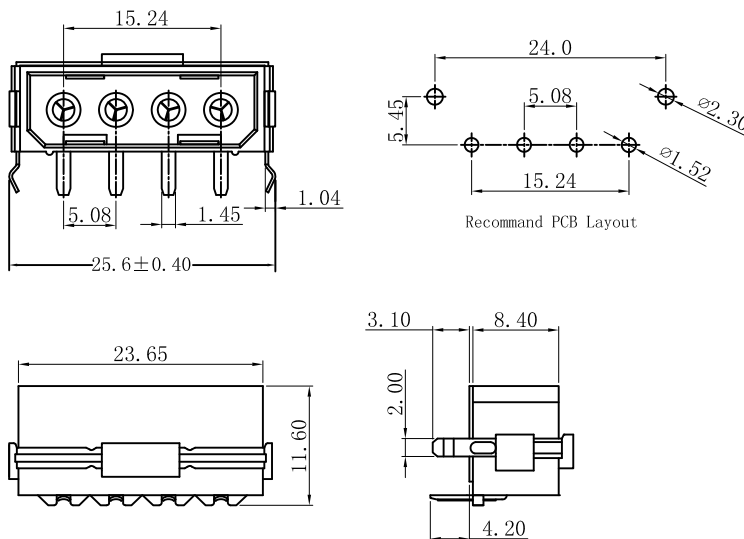
|                   |              |               |             |                    |
|-------------------|--------------|---------------|-------------|--------------------|
| JVT1114WN2-04SN-D | PA66 UL94V-2 | Brass         | Tin Plated  | JVT1114 Housing    |
| PART NO           | Material     | Material(Pin) | Finish(Pin) | Mates With Part(s) |

**JVT1114W** — 5.08mm Pitch Wafer-DIP TYPE —



|                    |              |               |             |                    |
|--------------------|--------------|---------------|-------------|--------------------|
| JVT1114WN2-04SNE-D | PA66 UL94V-2 | Brass         | Tin Plated  | JVT1114 Housing    |
| PART NO            | Material     | Material(Pin) | Finish(Pin) | Mates With Part(s) |

**JVT1114W** — 5.08mm Pitch Wafer-DIP TYPE —



|                     |              |               |             |                    |
|---------------------|--------------|---------------|-------------|--------------------|
| JVT1114W9T-04SNRL-D | PA9T UL94V-0 | Brass         | Tin Plated  | JVT1114 Housing    |
| JVT1114W6T-04SNRL-D | PA6T UL94V-0 |               |             |                    |
| JVT1114WXX-04SNRL-D | PA66 UL94V-2 |               |             |                    |
| PART NO             | Material     | Material(Pin) | Finish(Pin) | Mates With Part(s) |

**JVT1114H**

5.08mm Pitch housing

HOUSING

Part No.: JVT1114HN2-04M

Material: PA66 UL 94V-2

Mates With Part(s): JVT1114 Terminal

