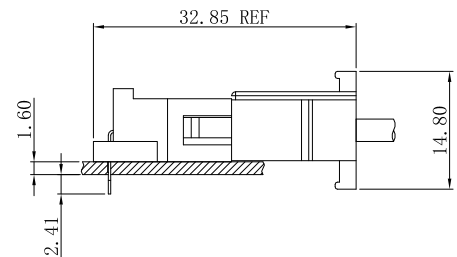
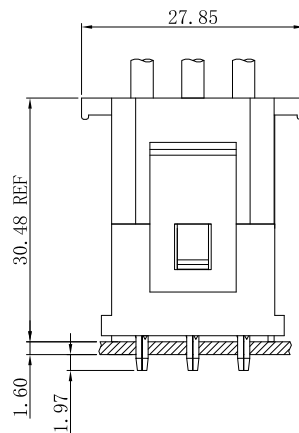
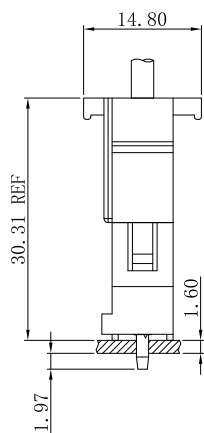


Specifications

- Voltage rating: 300V AC, DC
- Current Rating: 10A, AC, DC
- Withstand voltage: 1500V AC/minute
- Contact resistance: 20mΩ max
- Insulation resistance: 1000mΩ min
- Temperature range: -40°C ~ +105°C
- Compliant with RoHS and REACH
- Contact JVT for details

Assembly layout



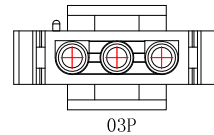
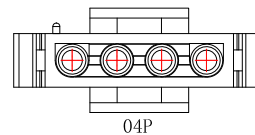
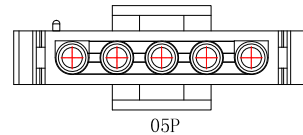
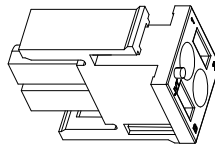
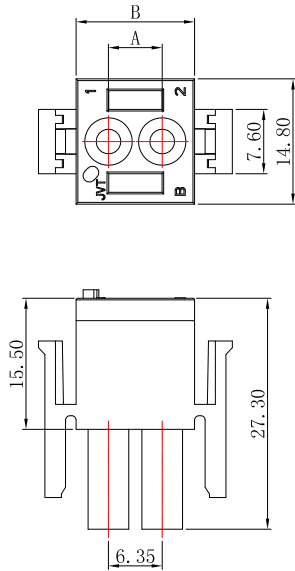
JVT6350H

6.35mm Pitch housing

HOUSING

Part No.: JVT6350HN2-XX
Material: Nylon 66 UL94V-2
Mates With Part(s): JVT6350 Terminal

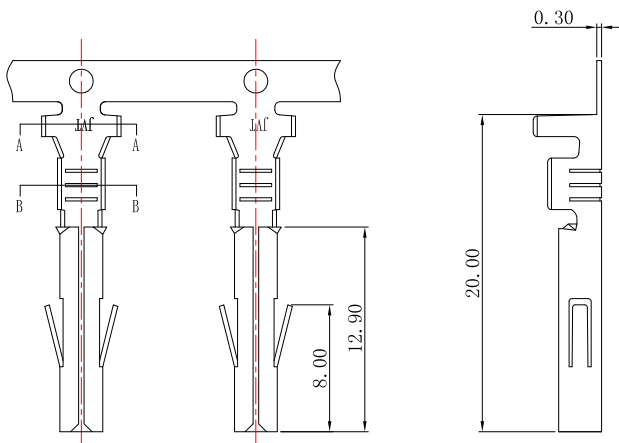
JVT6350HN2-XX
Logo
Series NO.
Housing
N2-PA66 UL94V-2
Pin NO.



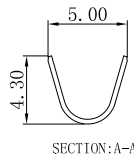
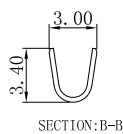
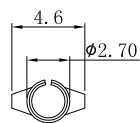
Poles	Dimensions (mm)	
	A	B
02	6.35	14.00
03	12.70	20.35
04	19.05	26.70
05	25.40	33.05

JVT6350T

6.35mm Pitch Crimp Terminal



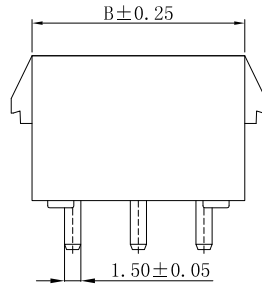
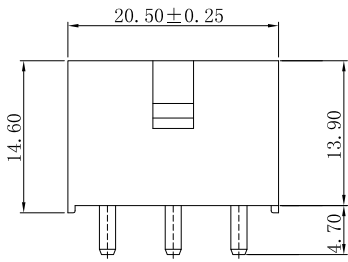
JVT6350TP-SNS
Logo
Series NO.
T-Terminal
P-Phosphor bronze
S-Stamping before Plating
SN-Tin Plated



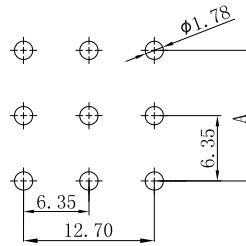
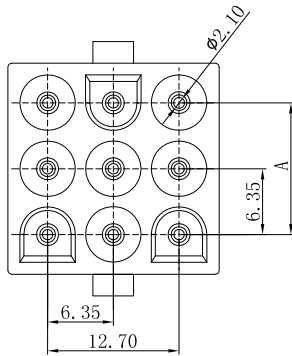
JVT6350TP-SNS	Phosphor Bronze	Tin-plated	16-24awg	3.5mmMax	JVT6350H
PART NO	Material	Finish(Pin)	Wire Range	Insulation O.D.	Mates With Part(s)

JVT6353W

6.35mm Pitch Wafer-DIP TYPE



JVT6353WN2-3*XXSN-D
Logo Series NO. Wafer N2-PA66 UL94V-2 DIP SN-Tin-plated PIN NO.



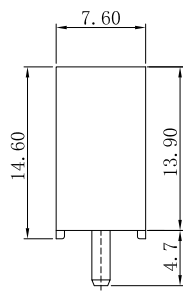
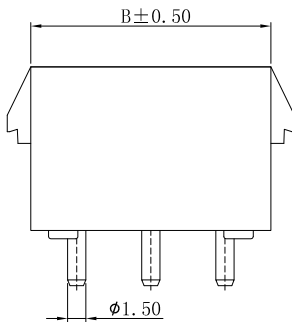
RECOMMEND PCB LAYOUT

Poles	Dimensions (mm)	
	A	B
3X02	6.35	14.20
3X03	12.70	20.55
3X04	19.05	26.90
3X05	25.40	33.25

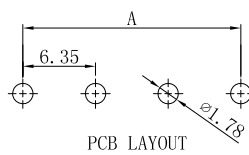
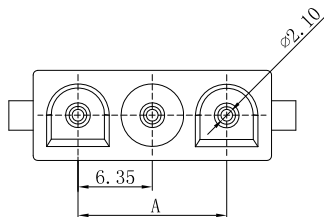
JVT6353WN2-3*XXSN-D	PA66 UL94V-2	Brass	Tin Plated	JVT6350 Housing
PART NO	Material	Material (Pin)	Finish (Pin)	Mates With Part (s)

JVT6353W

6.35mm Pitch Wafer-DIP TYPE



JVT6353WN2-XXSN-D
Logo Series NO. Wafer PA66 UL94V-2 DIP SN-Tin-plated PIN No.



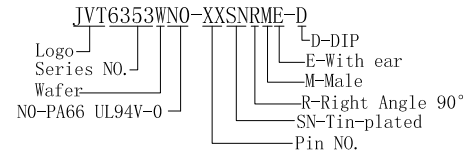
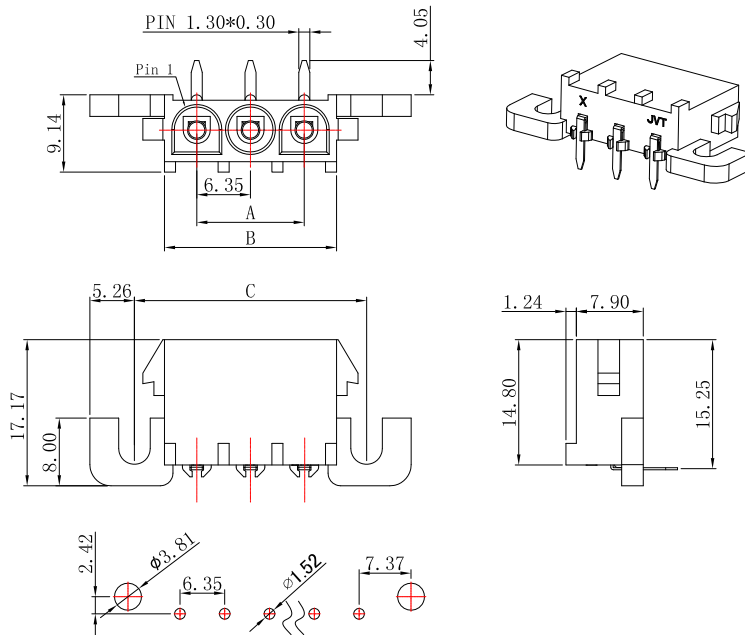
PCB LAYOUT

Poles	DIM	
	A	B
02	6.35	14.20
03	12.70	20.55
04	19.05	26.90
05	25.40	33.25
06	31.75	39.60
08	44.45	52.30

JVT6353WN2-XXSN-D	PA66 UL94V-2	Brass	Tin Plated	JVT6350 Housing
PART NO	Material	Material (Pin)	Finish (Pin)	Mates With Part (s)

JVT6353W

6.35mm Pitch Wafer-DIP TYPE

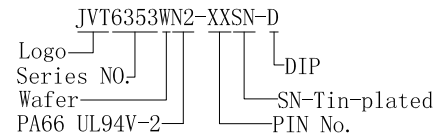
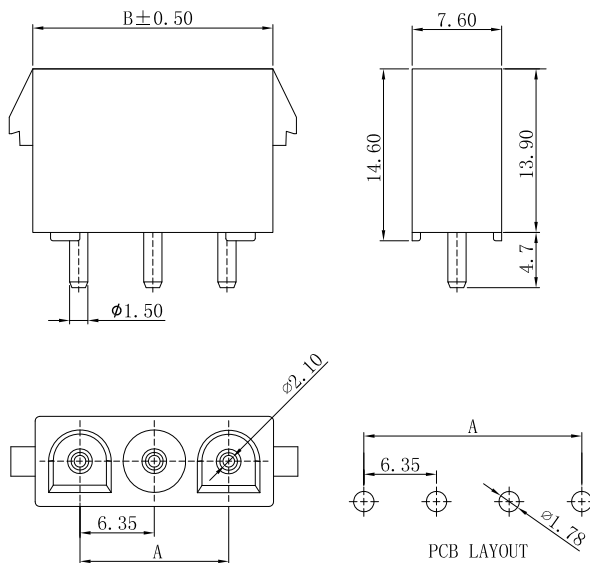


Poles	Dimensions (mm)			Poles	Dimensions (mm)		
	A	B	C		A	B	C
02	6.35	13.97	21.08	07	38.10	45.72	52.83
03	12.70	20.32	27.43	08	44.45	52.07	59.18
04	19.05	26.67	33.78	09	50.80	58.42	65.53
05	25.40	33.02	40.13	10	57.15	64.77	71.88
06	31.75	39.37	46.48				

JVT6353WN0-XXSNRME-D	PA66 UL94V-0	Brass	Tin Plated	JVT6350 Housing
PART NO	Material	Material (Pin)	Finish (Pin)	Mates With Part (s)

JVT6353W

6.35mm Pitch Wafer-DIP TYPE



Poles	DIM	
	A	B
02	6.35	14.20
03	12.70	20.55
04	19.05	26.90
05	25.40	33.25
06	31.75	39.60
08	44.45	52.30

JVT6353WN2-XXSN-D	PA66 UL94V-2	Brass	Tin Plated	JVT6350 Housing
PART NO	Material	Material (Pin)	Finish (Pin)	Mates With Part (s)

JVT6350H

6.35mm Pitch housing

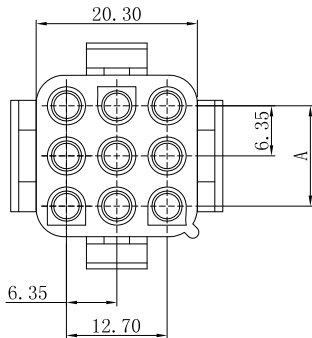
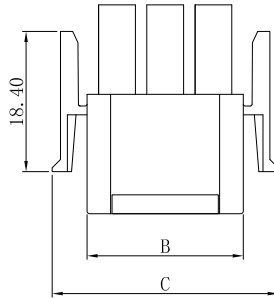
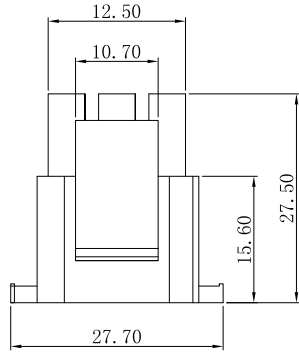
HOUSING

Part No.: JVT6350HN2-XX

Material: Nylon 66 UL94V-2

Mates With Part(s): JVT6350 Terminal

JVT6350HN2-XX
Logo
Series NO.
Housing
N2-PA66 UL94V-2
Pin NO.



Poles	Dimensions (mm)		
	A	B	C
3*02	6.35	14.20	23.10
3*03	12.70	20.55	29.50
3*04	19.05	26.90	35.80
3*05	25.40	33.25	42.15