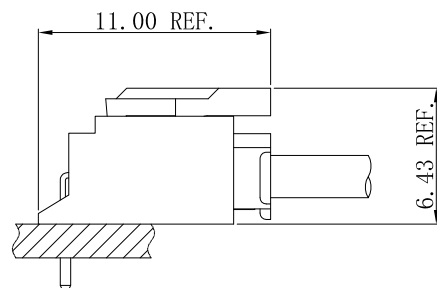
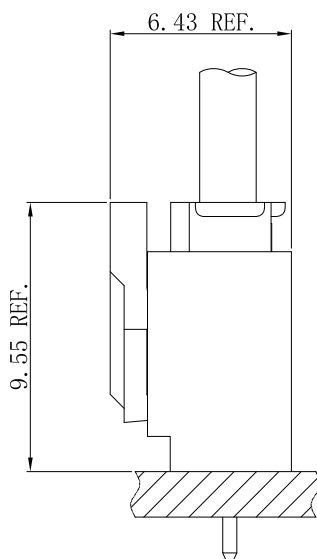


Specifications

- Voltage rating: 125V AC, DC
 - Current Rating: 2A, AC, DC
 - Withstand voltage: 1000V AC/minute
 - Contact resistance: 20mΩ max
 - Insulation resistance: 1000mΩ min
 - Temperature range: -40°C ~ +105°C
 - Suitable JVT2020T series TER
 - JVT2035W series Wafer
- Compliant with RoHS and REACH
Contact JVT for details

Assembly layout

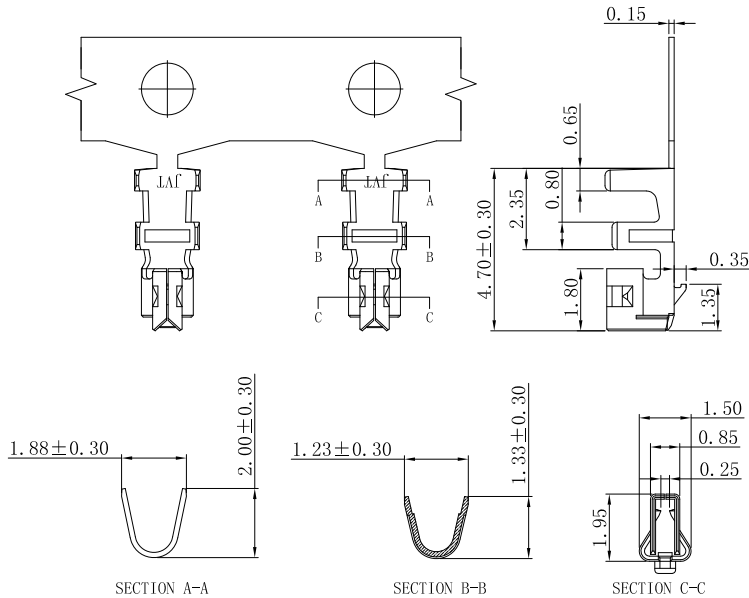


JVT2020 SERIES

2.0mm pitch wire to board connector

JVT2020T

2.0mm Pitch Crimp Terminal

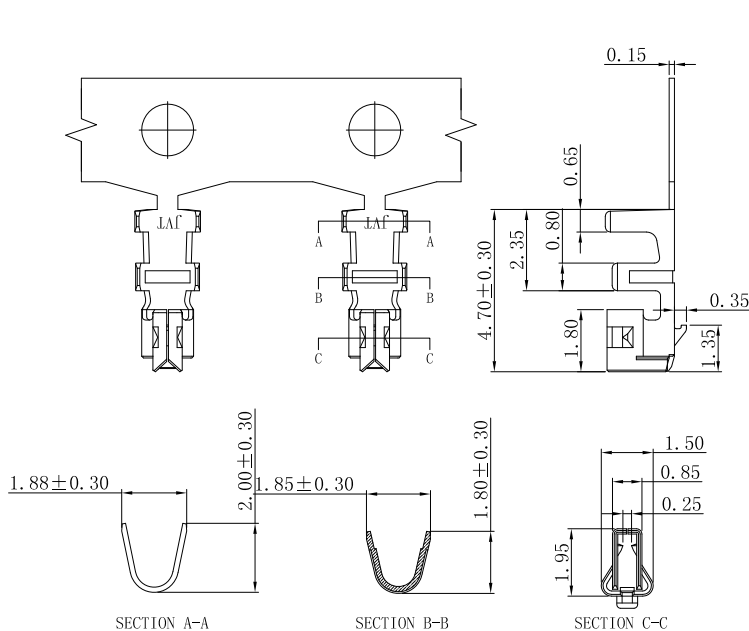


JVT2020TP-SNS
Logo
Series NO.
T-Terminal
P-Phosphor bronze
S-Stamping before Plating
Tin Plated

JVT2020TP-SNS	Phos Bronze	Tin Plated	AWG#24-30	1.4mm(Max)	JVT2035 HOUSING
					JVT2065 HOUSING
					JVT2066 HOUSING
					JVT2068 HOUSING
PART NO	Material	Finish(Pin)	Wire Range	Insulation O.D.	Mates With Part(s)

JVT2020T

2.0mm Pitch Crimp Terminal

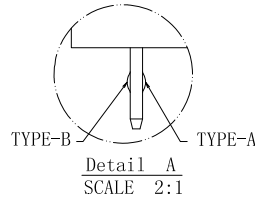
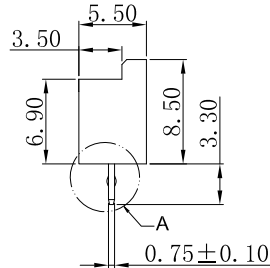
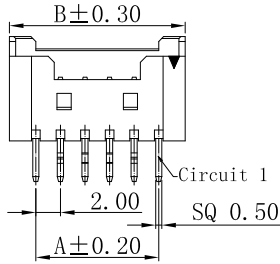
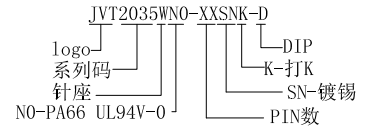
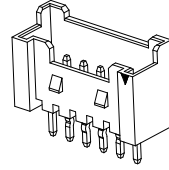
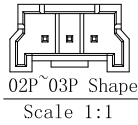
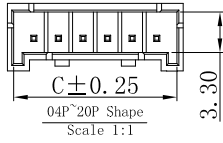


JVT2020TP-SNSH
Logo
Series NO.
T-Terminal
P-Phosphor bronze
H-High
S-Stamping before Plating
Tin Plated

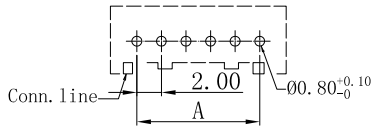
JVT2020TP-SNSH	Phos Bronze	Tin Plated	AWG#22-26	1.4mm(Max)	JVT2035 HOUSING
					JVT2065 HOUSING
					JVT2066 HOUSING
					JVT2068 HOUSING
PART NO	Material	Finish(Pin)	Wire Range	Insulation O.D.	Mates With Part(s)

JVT2035W

2.0mm Pitch Wafer-DIP TYPE



Poles	Dimensions (mm)			Poles	Dimensions (mm)		
	A	B	C		A	B	C
02	2.00	7.70	5.30	12	22.00	26.30	25.30
03	4.00	9.70	7.30	13	24.00	28.30	27.30
04	6.00	10.30	9.30	14	26.00	30.30	29.30
05	8.00	12.30	11.30	15	28.00	32.30	31.30
06	10.00	14.30	13.30	16	30.00	34.30	33.30
07	12.00	16.30	15.30	17	32.00	36.30	35.30
08	14.00	18.30	17.30	18	34.00	38.30	37.30
09	16.00	20.30	19.30	19	36.00	40.30	39.30
10	18.00	22.30	21.30	20	38.00	42.30	41.30
11	20.00	24.30	23.30				

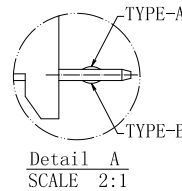
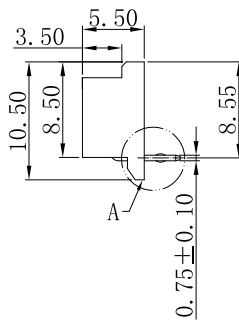
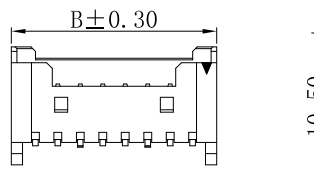
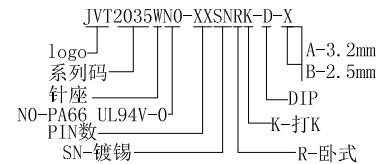
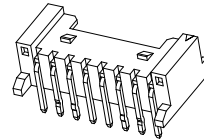
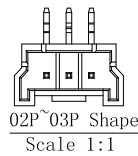
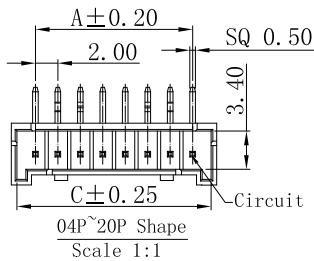


Recommended P.C.B Layout
General Tolerance ±0.05

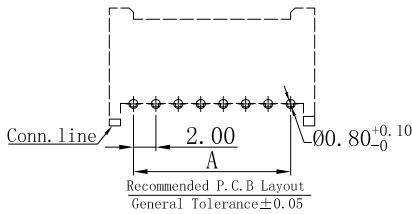
JVT2035WN0-XXSNK-D	PA66 UL94V-0	Brass	Tin Plated	JVT2035 Housing
PART NO	Material	Material(Pin)	Finish(Pin)	Mates With Part(s)

JVT2035W

2.0mm Pitch 90°Wafer-DIP TYPE



Poles	Dimensions (mm)			Poles	Dimensions (mm)		
	A	B	C		A	B	C
02	2.00	7.70	5.30	12	22.00	26.30	25.30
03	4.00	9.70	7.30	13	24.00	28.30	27.30
04	6.00	10.30	9.30	14	26.00	30.30	29.30
05	8.00	12.30	11.30	15	28.00	32.30	31.30
06	10.00	14.30	13.30	16	30.00	34.30	33.30
07	12.00	16.30	15.30	17	32.00	36.30	35.30
08	14.00	18.30	17.30	18	34.00	38.30	37.30
09	16.00	20.30	19.30	19	36.00	40.30	39.30
10	18.00	22.30	21.30	20	38.00	42.30	41.30
11	20.00	24.30	23.30				



Recommended P.C.B Layout
General Tolerance ±0.05

JVT2035WN0-XXSNRK-D-X	PA66 UL94V-0	Brass	Tin Plated	JVT2035 Housing
PART NO	Material	Material(Pin)	Finish(Pin)	Mates With Part(s)

JVT2035H

2.0mm Pitch housing

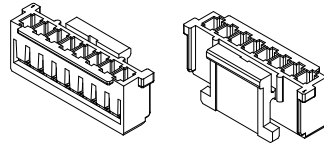
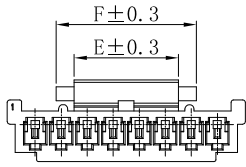
HOUSING

Part No. : JVT2035HNO-XX

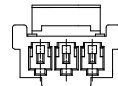
Material: Nylon 66 UL94V-0

Mates With Part(s): JVT2035 Terminal

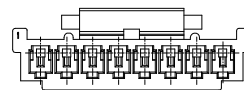
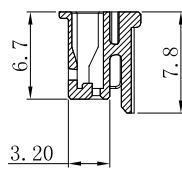
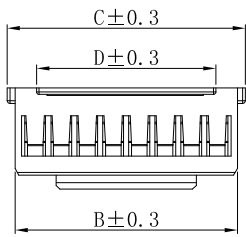
JVT2035HNO-XX
 logo 系列码 胶壳
 PIN数
 N0-PA66 UL94V-0



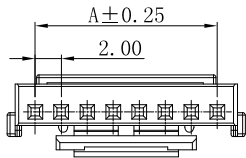
02P



03P



04-20P



Poles	DIM(mm)					
	A	B	C	D	E	F
02	2.00	5.10	7.17			
03	4.00	7.10	9.17			
04	6.00	9.10	10.30	5.80	4.00	6.40
05	8.00	11.10	12.30	7.80	4.00	6.40
06	10.00	13.10	14.30	9.80	4.00	6.40
07	12.00	15.10	16.30	11.80	4.00	6.40
08	14.00	17.10	18.30	13.80	8.00	10.80
09	16.00	19.10	20.30	15.80	8.00	10.80
10	18.00	21.10	22.30	17.80	8.00	10.80
11	20.00	23.10	24.30	19.80	8.00	10.80
12	22.00	25.10	26.30	21.80	8.00	10.80
13	24.00	27.10	28.30	23.80	8.00	10.80
14	26.00	29.10	30.30	25.80	8.00	10.80
15	28.00	31.10	32.30	27.80	8.00	10.80
16	30.00	33.10	34.30	29.80	8.00	10.80
17	32.00	35.10	36.30	31.80	8.00	10.80
18	34.00	37.10	38.30	33.80	8.00	10.80
19	36.00	39.10	40.30	35.80	8.00	10.80
20	38.00	41.10	42.30	37.80	8.00	10.80