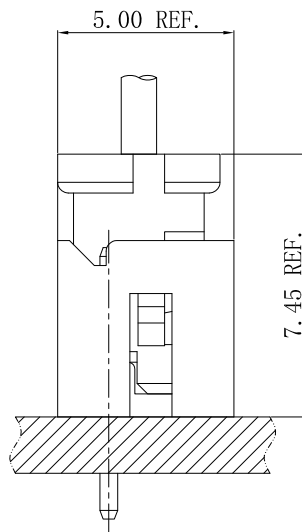


Specifications

- Voltage rating: 250V AC, DC
- Current Rating: 3A, AC, DC
- Withstand voltage: 650V AC/minute
- Contact resistance: 30mΩ max
- Insulation resistance: 1000mΩ min
- Temperature range: -40°C ~ +105°C
- *Suitable JVT2033T series Terminal
JVT2033W series Wafer
- Compliant with RoHS and REACH
Contact JVT for details

Assembly layout



JVT2033H

2.0mm Pitch housing

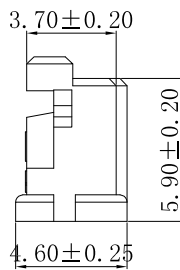
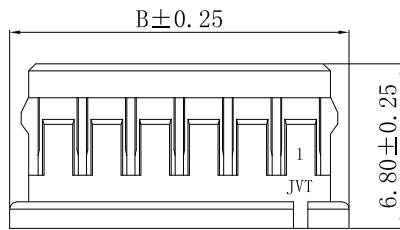
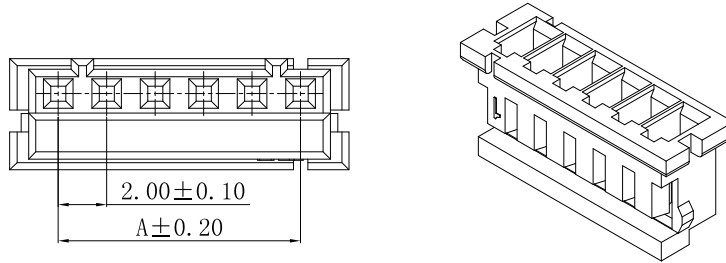
HOUSING

Part No. : JVT2033HPT-XXBK

Material: PBT UL94V-0

Mates With Part(s): JVT2033 Terminal

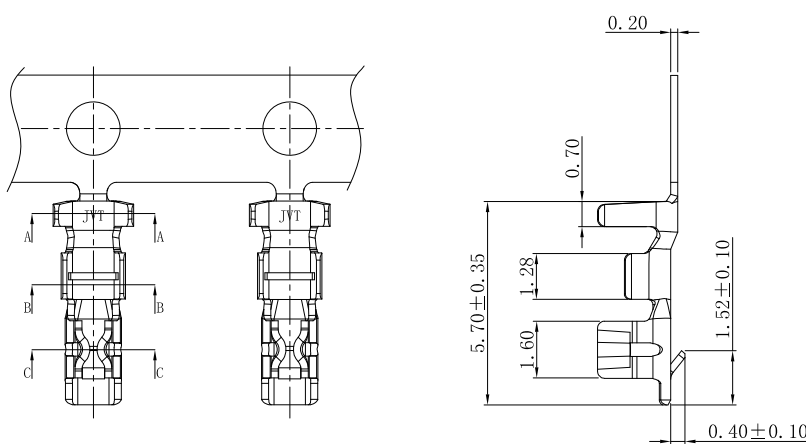
JVT2033HPT-XXBK
Logo Series NO. Housing BK-Black PIN NO. PT-PBT



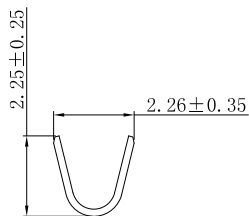
Poles	DIM (mm)	
	A	B
02	2.00	6.00
03	4.00	8.00
04	6.00	10.00
05	8.00	12.00
06	10.00	14.00
07	12.00	16.00
08	14.00	18.00
09	16.00	20.00
10	18.00	22.00
11	20.00	24.00
12	22.00	26.00
13	24.00	28.00
14	26.00	30.00
15	28.00	32.00

JVT2033T

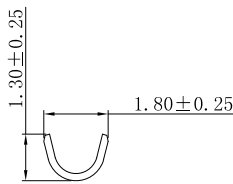
2.0mm Pitch Crimp Terminal



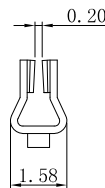
JVT2033TP-XXS
Logo Series NO. T-Terminal P-Phosphor bronze S-Stamping before Plating SN-Tin Plated GA-All gold plating



SECTION: A-A



SECTION: B-B

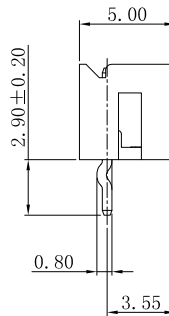
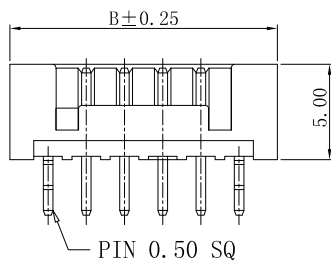
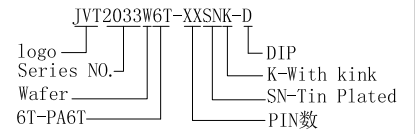
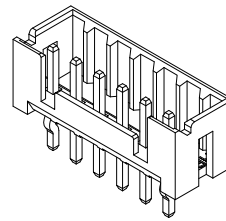
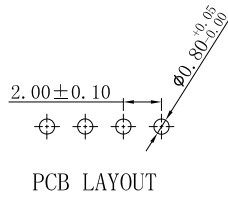
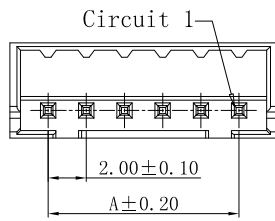


SECTION: C-C

JVT2033TP-GAS	Phos Bronze	Gold Plated	AWG#22-28	1.4mm(Max)	JVT2033 HOUSING
JVT2033TP-SNS		Tin Plated			
PART NO	Material	Finish(Pin)	Wire Range	Insulation O.D.	Mates With Part(s)

JVT2033W

2.0mm Pitch Wafer-DIP TYPE



Poles	DIM (mm)	
	A	B
02	2.00	6.00
03	4.00	8.00
04	6.00	10.00
05	8.00	12.00
06	10.00	14.00
07	12.00	16.00
08	14.00	18.00
09	16.00	20.00
10	18.00	22.00
11	20.00	24.00
12	22.00	26.00
13	24.00	28.00
14	26.00	30.00
15	28.00	32.00

JVT2033W6T-XXSNK-D	PA6T UL94V-0	Brass	Tin plating	Brass	JVT2033 Housing
PART NO	Material	Material(Pin)	Finish(Pin)	Material (Solder Tabs)	Mates With Part(s)