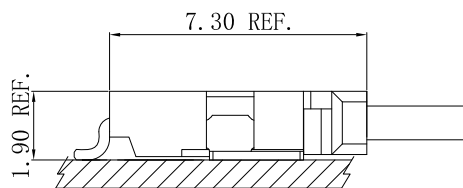


Specifications

- Voltage rating: 125V AC, DC
- Current Rating: 1A, AC, DC
- Withstand voltage: 500V AC/minute
- Contact resistance: 20mΩ max
- Insulation resistance: 500MΩ min
- Temperature range: -40°C ~ +105°C
- Compliant with RoHS and REACH
- Contact JVT for details

Assembly layout



JVT1258/1259 SERIES 1.25mm pitch wire to board connector

JVT1258H

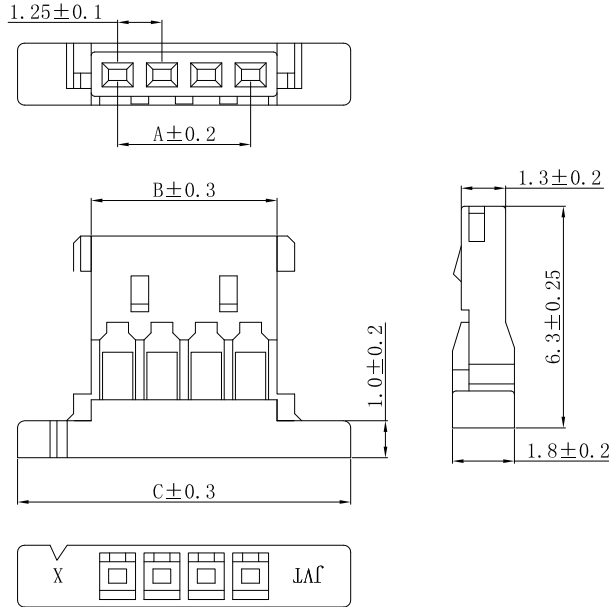
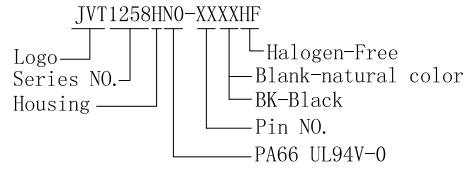
1.25mm Pitch housing

HOUSING

Part No. : JVT1258HN0-XXXXHF

Material: Nylon 66 UL94V-0

Mates With Part(s): JVT1258 Terminal



Poles	Dimensions (mm)		
	A	B	C
02	1.25	2.72	5.72
03	2.50	3.97	6.97
04	3.75	5.22	8.22
05	5.00	6.47	9.47
06	6.25	7.72	10.72
07	7.50	8.97	11.97
08	8.75	10.22	13.22
09	10.00	11.47	14.47
10	11.25	12.72	15.72
11	12.50	13.97	16.97
12	13.75	15.22	18.22
14	16.25	17.72	20.72
15	17.50	18.97	21.97
16	17.75	20.22	23.22
...
30	36.25	37.72	40.72

Unit:mm

JVT1258H

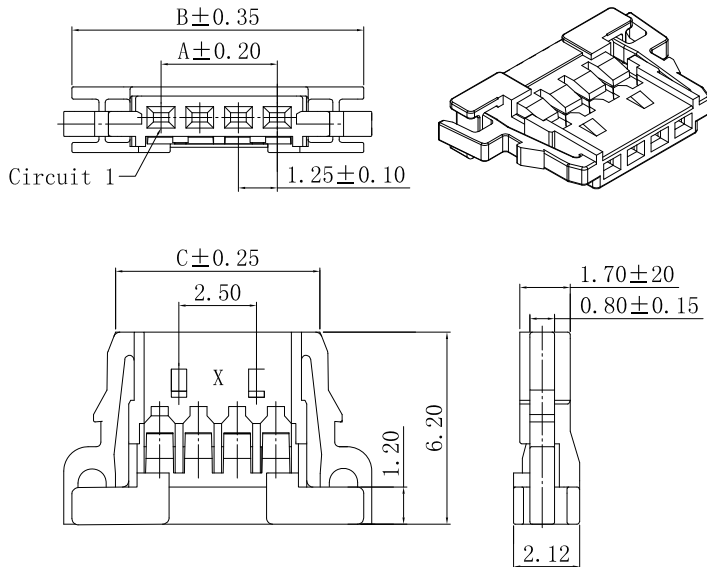
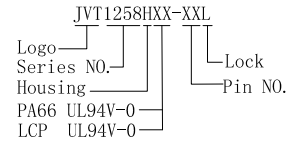
1.25mm Pitch housing

HOUSING

Part No. : JVT1258HXX-XXL

Material: PA66/LCP UL94V-0

Mates With Part(s): JVT1258 Terminal

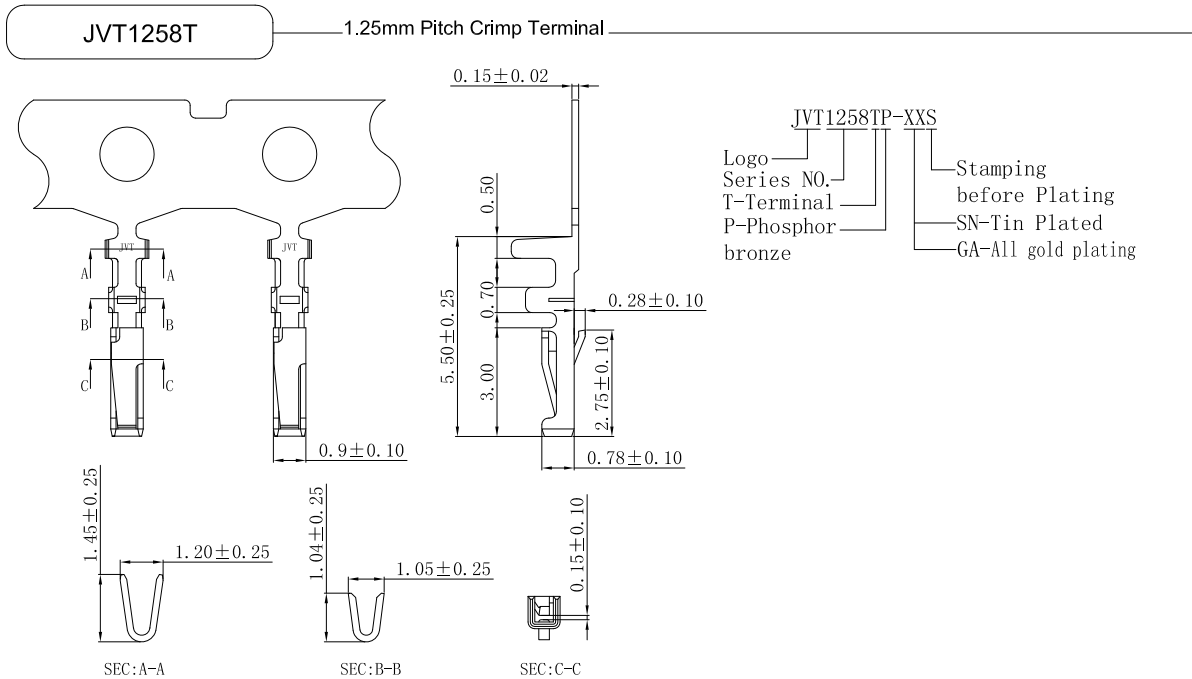


Poles	Dimensions (mm)		
	A	B	C
02	1.25	6.75	4.10
03	2.50	8.00	5.35
04	3.75	9.25	6.60
05	5.00	10.50	7.85
06	6.25	11.75	9.10
07	7.50	13.00	10.35
08	8.75	14.25	11.60
09	10.00	15.50	12.85
10	11.25	16.75	14.10
11	12.50	18.00	15.35
12	13.75	19.25	16.60
14	16.25	21.75	17.85
15	17.50	23.00	19.10
20	23.75	29.25	25.35
30	36.25	41.75	37.85

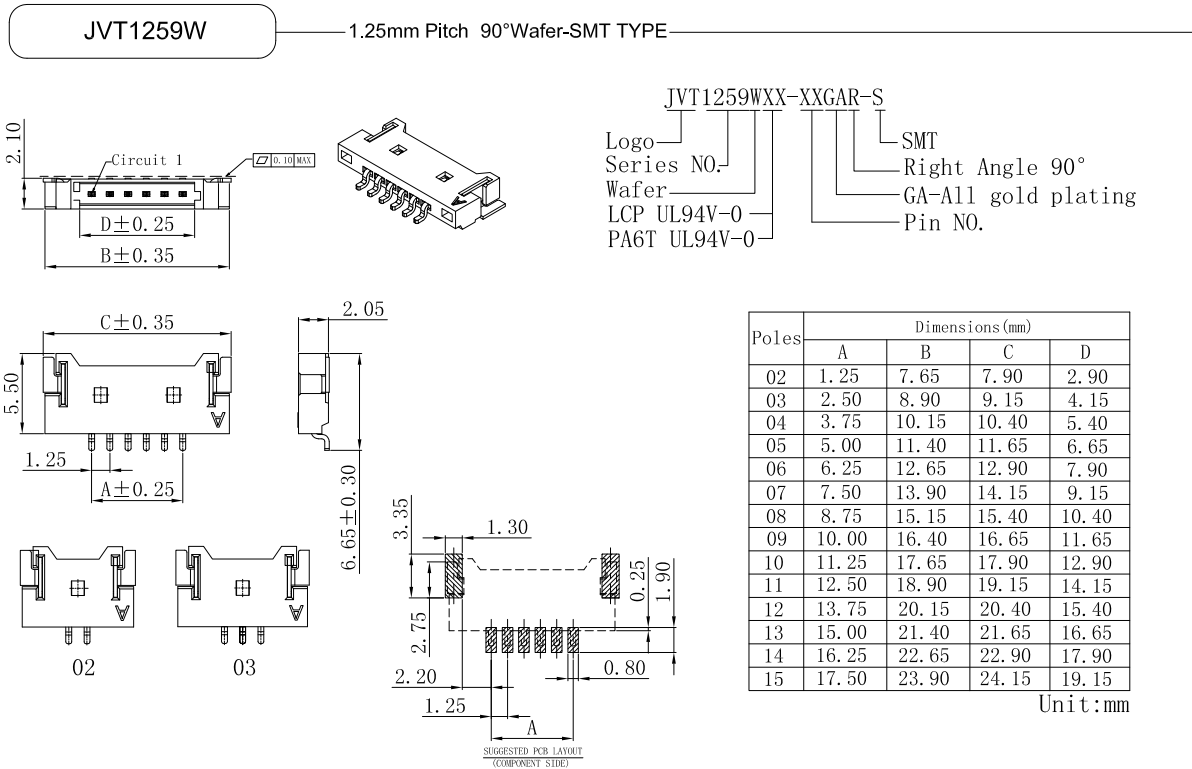
Unit:mm

JVT1258HLP-XXL	LCP UL94V-0	JVT1258TP-XXS
JVT1258HN0-XXL	PA66 UL94V-0	
PART NO	Material	Mates With Part(s)

JVT1258/1259 SERIES 1.25mm pitch wire to board connector



JVT1258TP-GAS	Phos Bronze	Gold Plated	AWG#28~32	0.8mm(Max)	JVT1258 HOUSING
JVT1258TP-SNS		Tin Plated			
PART NO	Material	Finish(Pin)	Wire Range	Insulation O.D.	Mates With Part(s)



JVT1259W6T-XXGAR-S	PA6T UL94V-0	Phos Bronze	Gold plated	Phos Bronze	Tin Plated	JVT1258 Housing
JVT1259WLP-XXGAR-S	LCP UL94V-0					
PART NO	Material	Material(Pin)	Finish(Pin)	Material (Solder Tabs)	Finish (Solder Tabs)	Mates With Part(s)