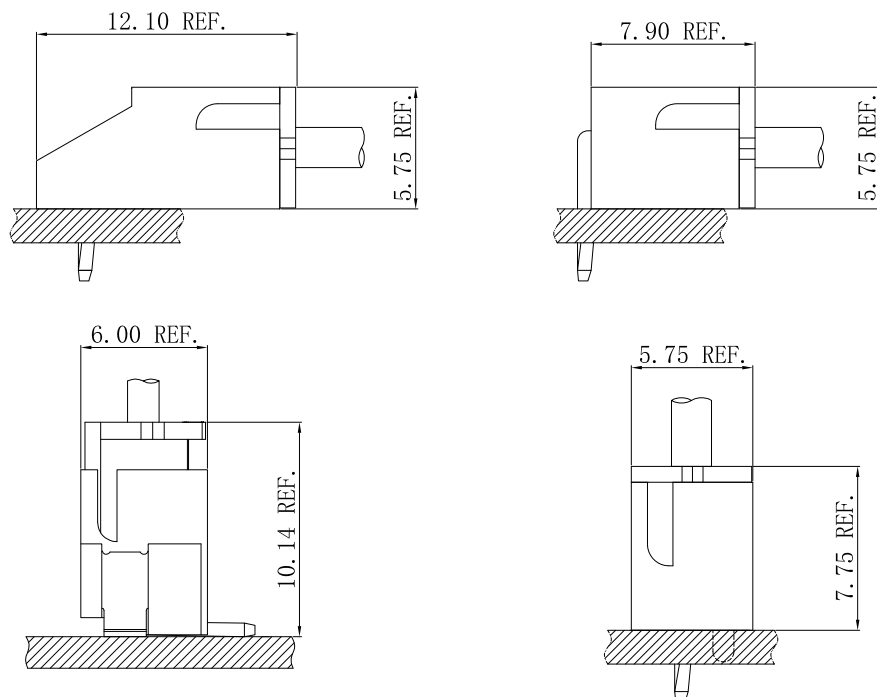


## Specifications

- Voltage rating: 250V AC, DC
- Current Rating: 3A, AC, DC
- Withstand voltage: 1000V AC/minute
- Contact resistance: 20mΩ max
- Insulation resistance: 1000mΩ min
- Temperature range: -40°C ~ +105°C
- \*Suitable JVT2001T series Terminal  
JVT1001W series Wafer
- Compliant with RoHS and REACH  
Contact JVT for details

## Assembly layout



**JVT2001H**

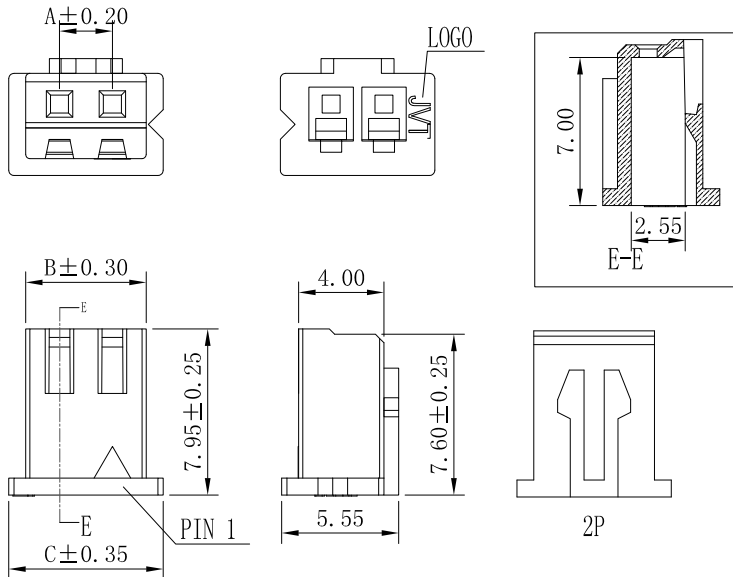
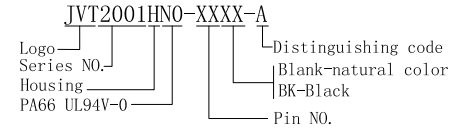
2.5mm Pitch housing

HOUSING

Part No. : JVT2001HNO-XXXX-A

Material: PA66 UL 94V-0

Mates With Part(s): JVT2001 Terminal



Poles	Dim(mm)			Poles	Dim(mm)		
	A	B	C		A	B	C
02	2.50	5.7	7.3	11	25.00	28.2	29.8
03	5.00	8.2	9.8	12	27.50	30.7	32.3
04	7.50	10.7	12.3	13	30.00	33.2	34.8
05	10.00	13.2	14.8	14	32.50	35.7	37.3
06	12.50	15.7	17.3	15	35.00	38.2	39.8
07	15.00	18.2	19.8	16	37.50	40.7	42.3
08	17.50	20.7	22.3	--	--	--	--
09	20.00	23.2	24.8	20	47.50	50.7	52.3
10	22.50	25.7	27.3				

**JVT2001H**

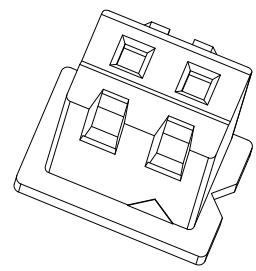
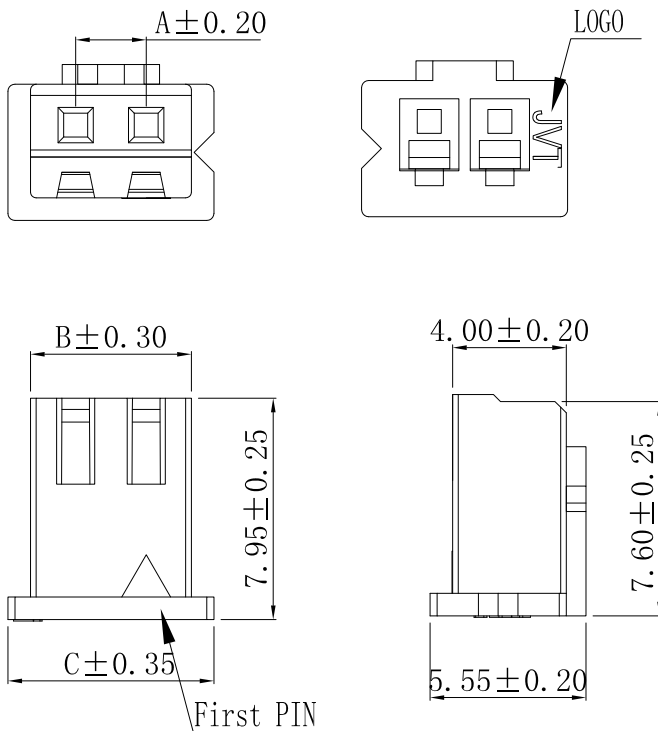
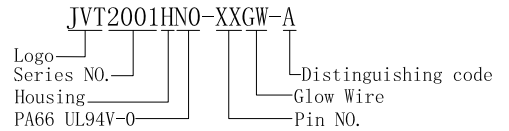
2.5mm Pitch housing

HOUSING

Part No. : JVT2001HNO-XXGW-A

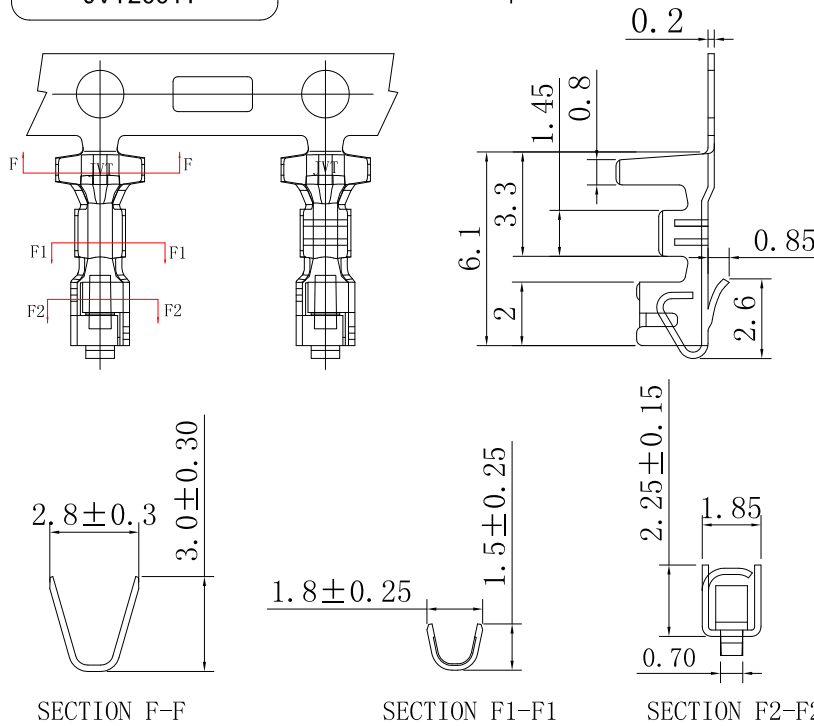
Material: PA66 UL 94V-0 Glow Wire750°C

Mates With Part(s): JVT2001 Terminal



Poles	Dim(mm)			Poles	Dim(mm)		
	A	B	C		A	B	C
02	2.50	5.7	7.3	11	25.00	28.2	29.8
03	5.00	8.2	9.8	12	27.50	30.7	32.3
04	7.50	10.7	12.3	13	30.00	33.2	34.8
05	10.00	13.2	14.8	14	32.50	35.7	37.3
06	12.50	15.7	17.3	15	35.00	38.2	39.8
07	15.00	18.2	19.8	16	37.50	40.7	42.3
08	17.50	20.7	22.3	--	--	--	--
09	20.00	23.2	24.8	20	47.50	50.7	52.3
10	22.50	25.7	27.3				

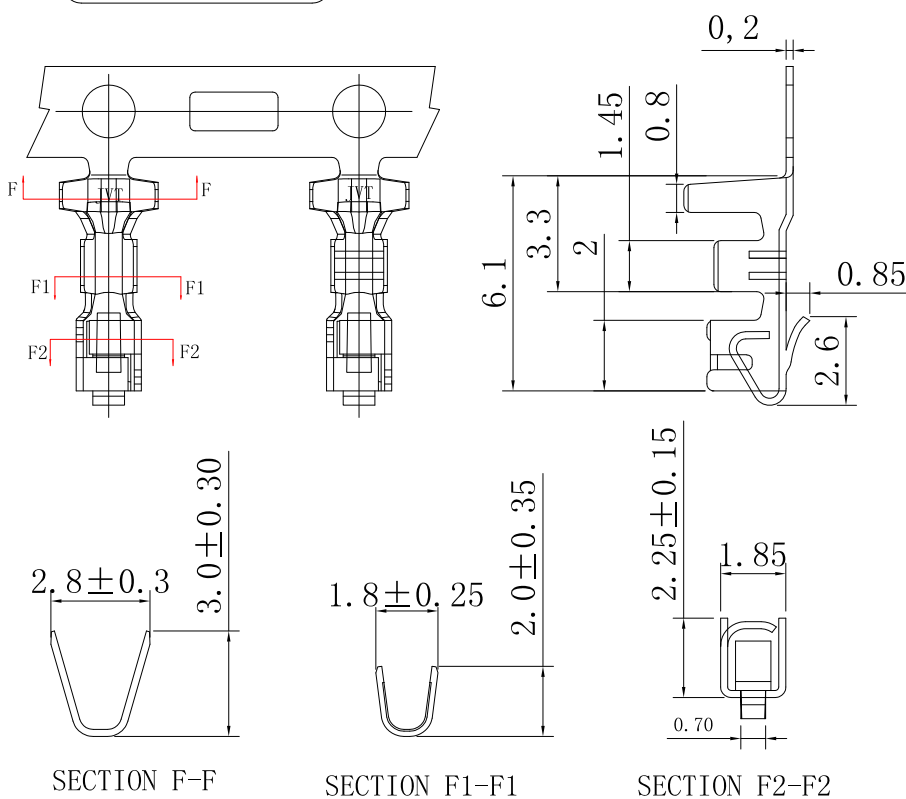
**JVT2001T** — 2.5mm Pitch Crimp Terminal



JVT2001TP-SNS-01  
Logo  
Series NO.  
T-Terminal  
P-phosphor  
S-Stamping before Plating  
SN-Tin Plated bronze

JVT2001TP-SNS-01	Phos Bronze	Tin Plated	AWG#22~30	1.9mm(Max)	JVT2001 HOUSING
PART NO	Material	Finish(Pin)	Wire Range	Insulation O.D.	Mates With Part(s)

**JVT2001T** — 2.5mm Pitch Crimp Terminal

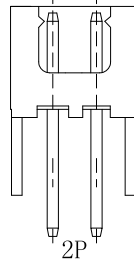
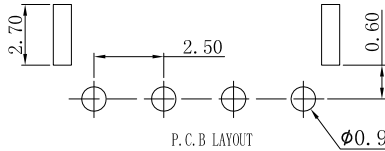
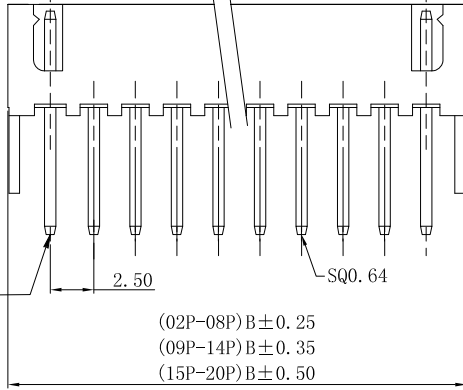
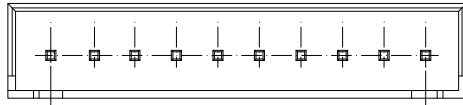


JVT2001TP-SNSH-01  
Logo  
Series NO.  
T-Terminal  
P-Phosphor  
H-High foot  
S-Stamping before Plating  
SN-Tin Plated bronze

JVT2001TP-SNSH-01	Phos Bronze	Tin Plated	AWG#20~26	1.9mm(Max)	JVT2001 HOUSING
PART NO	Material	Finish(Pin)	Wire Range	Insulation O.D.	Mates With Part(s)

**JVT1001W**

2.5mm Pitch Wafer-DIP TYPE



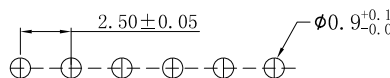
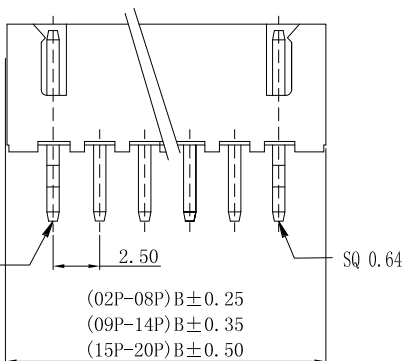
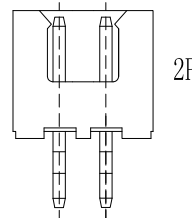
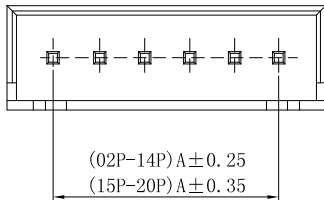
JVT1001WNO-XXDSN-D  
Logo  
Series NO.  
Wafer  
PA66 UL94V-0  
DIP  
Tin Plated  
D-Foolproof  
Pin NO.

Circuit	Dimensions (mm)		Circuit	Dimensions (mm)	
	DIM. A	DIM. B		DIM. A	DIM. B
02	2.50	7.50	12	27.50	32.50
03	5.00	10.00	13	30.00	35.00
04	7.50	12.50	14	32.50	37.50
05	10.00	15.00	15	35.00	40.00
06	12.50	17.50	16	37.50	42.50
07	15.00	20.00	17	40.00	45.00
08	17.50	22.50	18	42.50	47.50
09	20.00	25.00	19	45.00	50.00
10	22.50	27.50	20	47.50	52.50
11	25.00	30.00			

JVT1001WNO-XXDSN-D	PA66 UL94V-0	Brass	Tin Plated	JVT2001 Housing
PART NO	Material	Material(Pin)	Finish(Pin)	Mates With Part(s)

**JVT1001W**

2.5mm Pitch Wafer-DIP TYPE



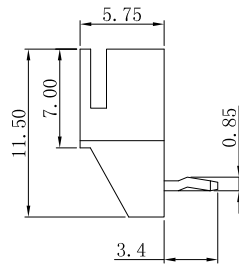
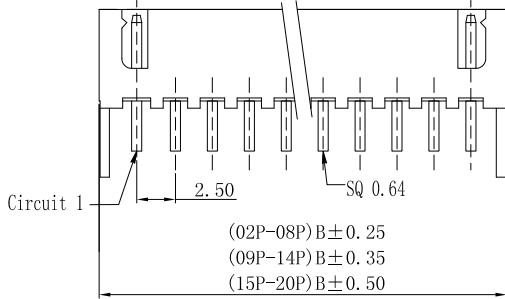
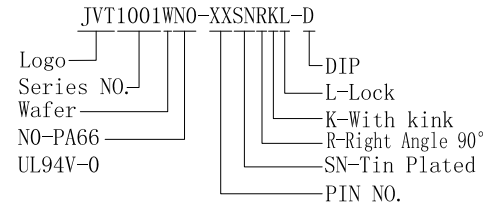
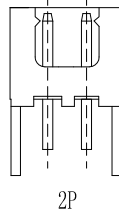
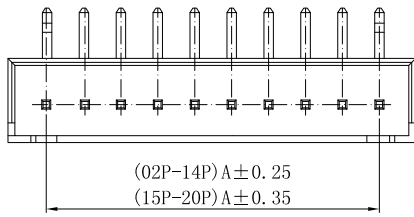
JVT1001WNO-XXSNK-D  
Logo  
Series NO.  
Wafer  
NO-PA66  
UL94V-0  
DIP  
K-With kink  
SN-Tin Plated  
PIN NO.

Circuit	Dimensions (mm)		Circuit	Dimensions (mm)	
	DIM. A	DIM. B		DIM. A	DIM. B
02	2.50	7.50	12	27.50	32.50
03	5.00	10.00	13	30.00	35.00
04	7.50	12.50	14	32.50	37.50
05	10.00	15.00	15	35.00	40.00
06	12.50	17.50	16	37.50	42.50
07	15.00	20.00	17	40.00	45.00
08	17.50	22.50	18	42.50	47.50
09	20.00	25.00	19	45.00	50.00
10	22.50	27.50	20	47.50	52.50
11	25.00	30.00			

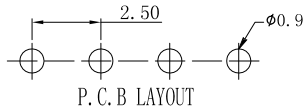
JVT1001WNO-XXSNK-D	PA66 UL94V-0	Brass	Tin Plated	JVT2001 Housing
PART NO	Material	Material(Pin)	Finish(Pin)	Mates With Part(s)

**JVT1001WRKL**

2.5mm Pitch 90° Wafer-DIP TYPE



Standard type

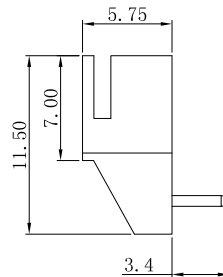
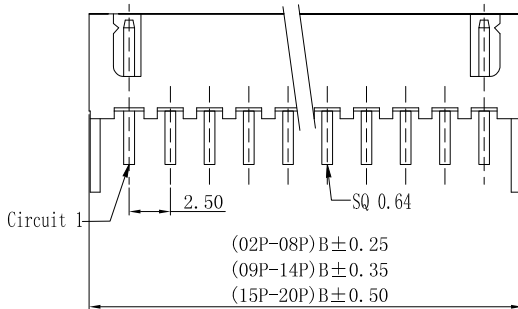
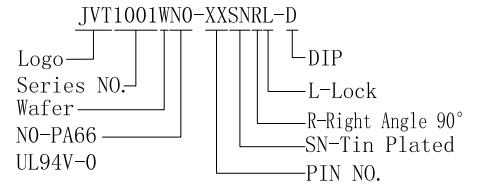
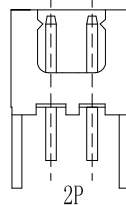
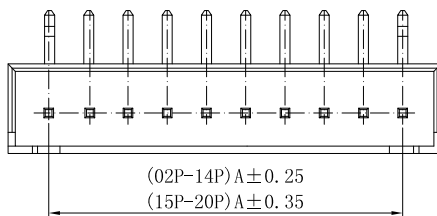


Circuit	Dimensions (mm)		Circuit	Dimensions (mm)	
	DIM. A	DIM. B		DIM. A	DIM. B
02	2.50	7.50	12	27.50	32.50
03	5.00	10.00	13	30.00	35.00
04	7.50	12.50	14	32.50	37.50
05	10.00	15.00	15	35.00	40.00
06	12.50	17.50	16	37.50	42.50
07	15.00	20.00	17	40.00	45.00
08	17.50	22.50	18	42.50	47.50
09	20.00	25.00	19	45.00	50.00
10	22.50	27.50	20	47.50	52.50
11	25.00	30.00			

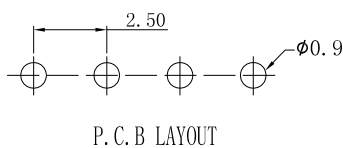
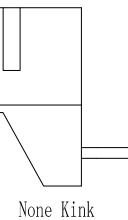
JVT1001WNO-XXSNRKL-D	PA66 UL94V-0	Brass	Tin Plated	JVT2001 Housing
PART NO	Material	Material(Pin)	Finish(Pin)	Mates With Part(s)

**JVT1001WRL**

2.5mm Pitch 90° Wafer-DIP TYPE



Standard type

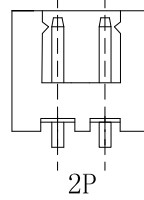
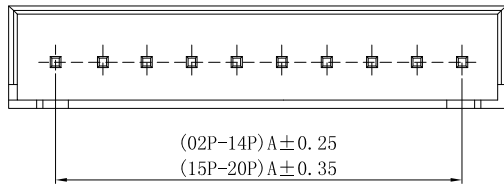


Circuit	A	B	Circuit	A	B
02	2.50	7.50	12	27.50	32.50
03	5.00	10.00	13	30.00	35.00
04	7.50	12.50	14	32.50	37.50
05	10.00	15.00	15	35.00	40.00
06	12.50	17.50	16	37.50	42.50
07	15.00	20.00	17	40.00	45.00
08	17.50	22.50	18	42.50	47.50
09	20.00	25.00	19	45.00	50.00
10	22.50	27.50	20	47.50	52.50
11	25.00	30.00			

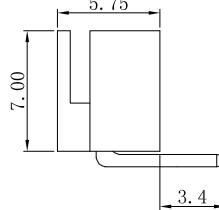
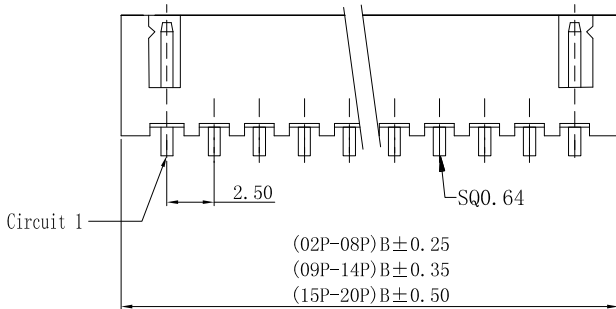
JVT1001WNO-XXSNRL-D	PA66 UL94V-0	Brass	Tin Plated	JVT2001 Housing
PART NO	Material	Material(Pin)	Finish(Pin)	Mates With Part(s)

**JVT1001WR**

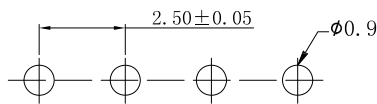
2.5mm Pitch Wafer-DIP TYPE



JVT1001WNO-XXSNR-D  
Logo  
Series NO.  
Wafer  
PA66 UL94V-0  
DIP  
R-Right Angle 90°  
SN-Tin Plated  
Pin NO.



Standard Type



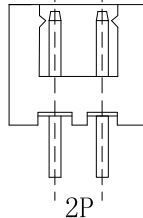
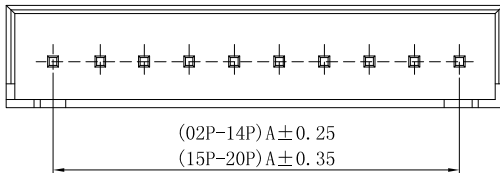
P. C. B LAYOUT

Circuit	Dimensions (mm)		Circuit	Dimensions (mm)	
	DIM. A	DIM. B		DIM. A	DIM. B
02	2.50	7.50	12	27.50	32.50
03	5.00	10.00	13	30.00	35.00
04	7.50	12.50	14	32.50	37.50
05	10.00	15.00	15	35.00	40.00
06	12.50	17.50	16	37.50	42.50
07	15.00	20.00	17	40.00	45.00
08	17.50	22.50	18	42.50	47.50
09	20.00	25.00	19	45.00	50.00
10	22.50	27.50	20	47.50	52.50
11	25.00	30.00			

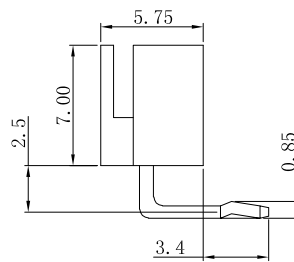
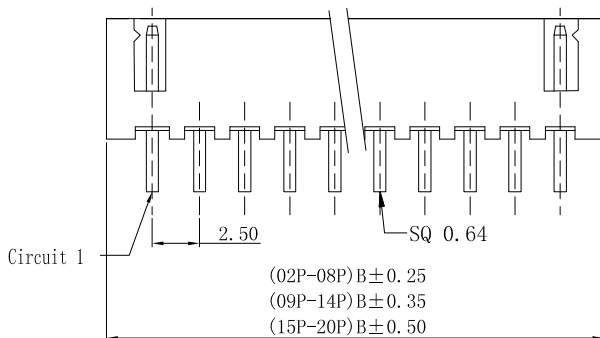
JVT1001WNO-XXSNR-D	PA66 UL94V-0	Brass	Tin Plated	JVT2001 Housing
PART NO	Material	Material(Pin)	Finish(Pin)	Mates With Part(s)

**JVT1001WRK**

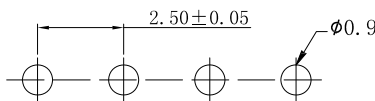
2.5mm Pitch Wafer-DIP TYPE



JVT1001WNO-XXSNRK-NL-G-D  
Logo  
Series NO.  
Wafer  
PA66 UL94V-0  
Pin NO.  
DIP  
G-High bend  
NL-Without wings  
K-With kink  
R-Right Angle 90°  
SN-Tin Plated



Standard Type



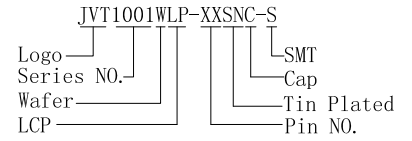
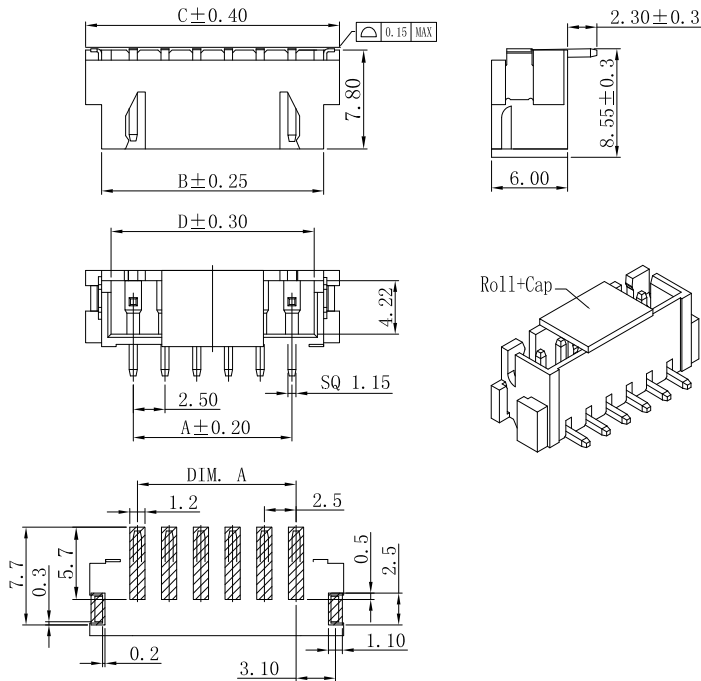
P. C. B LAYOUT

Circuit	Dimensions (mm)		Circuit	Dimensions (mm)	
	DIM. A	DIM. B		DIM. A	DIM. B
02	2.50	7.50	12	27.50	32.50
03	5.00	10.00	13	30.00	35.00
04	7.50	12.50	14	32.50	37.50
05	10.00	15.00	15	35.00	40.00
06	12.50	17.50	16	37.50	42.50
07	15.00	20.00	17	40.00	45.00
08	17.50	22.50	18	42.50	47.50
09	20.00	25.00	19	45.00	50.00
10	22.50	27.50	20	47.50	52.50
11	25.00	30.00			

JVT1001WNO-XXSNRK-NL-G-D	PA66 UL94V-0	Brass	Tin Plated	JVT2001 Housing
PART NO	Material	Material(Pin)	Finish(Pin)	Mates With Part(s)

**JVT1001W**

2.5mm Pitch Wafer-SMT TYPE

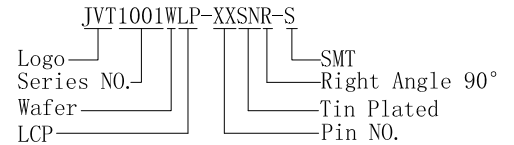
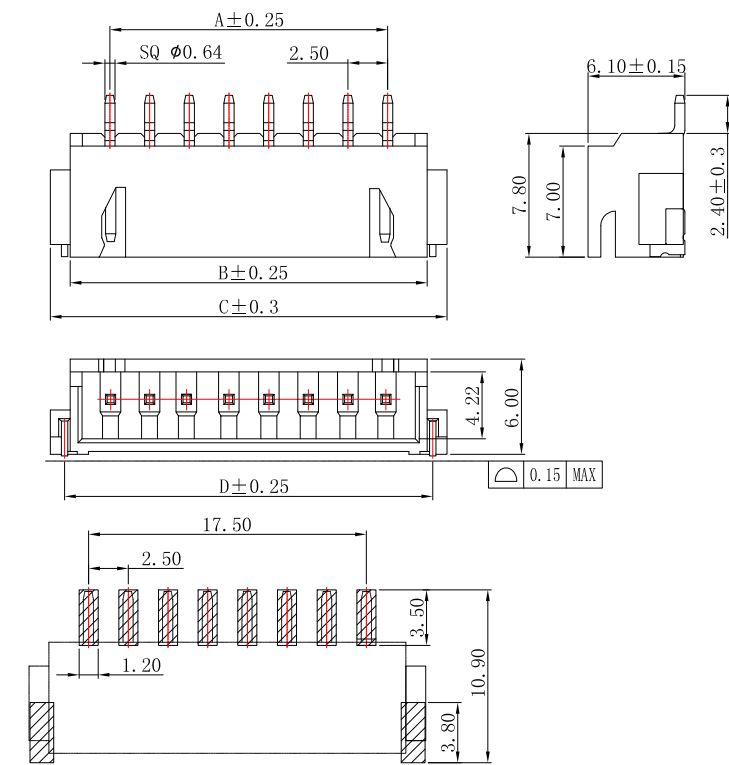


Circuit	Dimensions (mm)			
	A	B	C	D
02	2.50	7.50	10.00	6.00
03	5.00	10.00	12.50	8.50
04	7.50	12.50	15.00	11.00
05	10.00	15.00	17.50	13.50
06	12.50	17.50	20.00	16.00
07	15.00	20.00	22.50	18.50
08	17.50	22.50	25.00	21.00
09	20.00	25.00	27.50	23.50
10	22.50	27.50	30.00	26.00
11	25.00	30.00	32.50	28.50
12	27.50	32.50	35.00	31.00
13	30.00	35.00	37.50	33.50
14	32.50	37.50	40.00	36.00
15	35.00	40.00	42.50	38.50
16	37.50	42.50	45.00	41.00

JVT1001WLP-XXSNC-S	PA66 UL94V-0	Brass	Tin Plated	JVT2001 Housing
PART NO	Material	Material(Pin)	Finish(Pin)	Mates With Part(s)

**JVT1001W**

2.5mm Pitch 90° Wafer-SMT TYPE



Circuit	Dimensions (mm)			
	DIM. A	DIM. B	DIM. C	DIM. D
02	2.50	7.50	10.00	8.20
03	5.00	10.00	12.50	10.70
04	7.50	12.50	15.00	13.20
05	10.00	15.00	17.50	15.70
06	12.50	17.50	20.00	18.20
07	15.00	20.00	22.50	20.70
08	17.50	22.50	25.00	23.20
09	20.00	25.00	27.50	25.70
10	22.50	27.50	30.00	28.20
11	25.00	30.00	32.50	30.70
12	27.50	32.50	35.00	33.20
13	30.00	35.00	37.50	35.70
14	32.50	37.50	40.00	38.20
15	35.00	40.00	42.50	40.70
16	37.50	42.50	45.00	43.20

General Tolerance: ±0.05

JVT1001WLP-XXSNR-S	PA66 UL94V-0	Brass	Tin Plated	JVT2001 Housing
PART NO	Material	Material(Pin)	Finish(Pin)	Mates With Part(s)